

# **BenQ FP767**

---

*LCD Color Monitor*

*17.0" (43.2cm) LCD Panel Size*

*User's Manual*

**BenQ**

---

**Copyright**

Copyright © 2002 by BENQ Corporation. All rights reserved. No part of this publication may be reproduced, transmitted, transcribed, stored in a retrieval system or translated into any language or computer language, in any form or by any means, electronic, mechanical, magnetic, optical, chemical, manual or otherwise, without the prior written permission of BENQ Corporation.

---

**Disclaimer**

BENQ Corporation makes no representations or warranties, either expressed or implied, with respect to the contents hereof and specifically disclaims any warranties, merchantability or fitness for any particular purpose. Further, BENQ Corporation reserves the right to revise this publication and to make changes from time to time in the contents hereof without obligation of BENQ Corporation to notify any person of such revision or changes.

---

**Safety  
Instructions**

1. The AC plug isolates this equipment from the AC supply.
2. Unplug this product from the wall outlet before cleaning. Clean the LCD monitor surface with a lint-free, non-abrasive cloth. Avoid using any cleaning solution or glass cleaner.
3. Slots and openings on the back or top of the cabinet are provided for ventilation. They must not be blocked or covered. This product should never be placed near or over a radiator or heat register, or in a built-in installation unless proper ventilation is provided.
4. This product should be operated from the type of power indicated on the marking label. If you are not sure of the type of power available, consult your dealer or local power company.
5. Never push objects of any kind, or spill liquid of any kind into this product.
6. Do not attempt to service this product yourself, as opening or removing covers may expose you to dangerous voltages or other risks. If any above mentioned misuse or other accident (dropping, mis-operations) occurs, contact qualified service personnel for servicing.
7. The power supply cord serves as a power disconnect device for pluggable equipment. The socket outlet shall be installed near the equipment and shall be easily accessible.

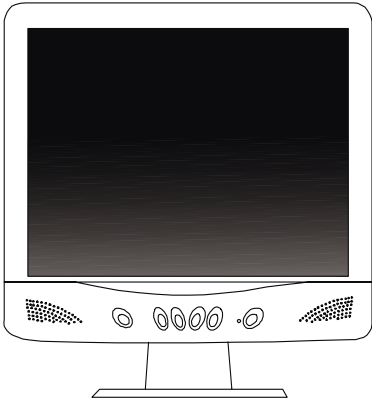
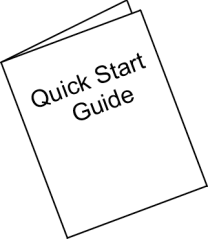

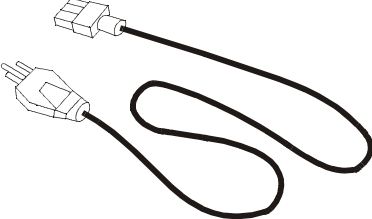
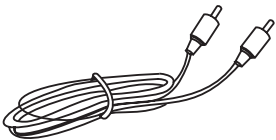
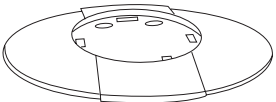

---

**Table  
of  
Contents**

Unpacking .....	3
Views of the Monitor .....	4
Front View .....	4
Back View (1) .....	4
Back View (2): Locations of plugs & sockets .....	5
Installation .....	6
Hardware Installation .....	6
Software Installation .....	8
Adjusting the Monitor .....	37
A Look at the Control Panel .....	37
Hot Key Mode .....	37
Main Menu Mode .....	38
Troubleshooting .....	43
Frequently Asked Questions (FAQ) .....	43
Need More Help? .....	44
Supported operating modes .....	45
Specifications .....	46

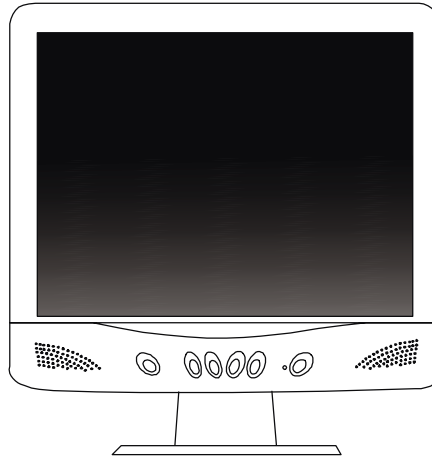
## Unpacking

Please check you have the following items. If they are missing or are damaged, please contact the dealer immediately at which you purchased the good.

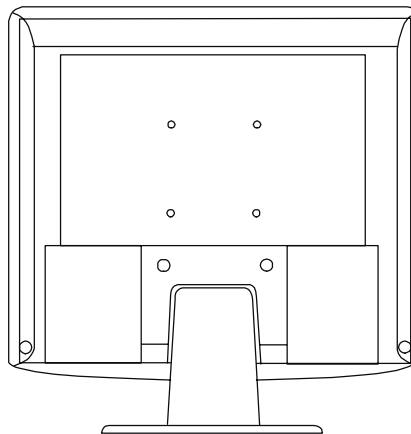
LCD monitor with undetachable signal cable	
Quick Start Guide	
CD-ROM	
Power Cord	
Audio Cable	
Extension Base	
Signal Cable	

## Views of the Monitor

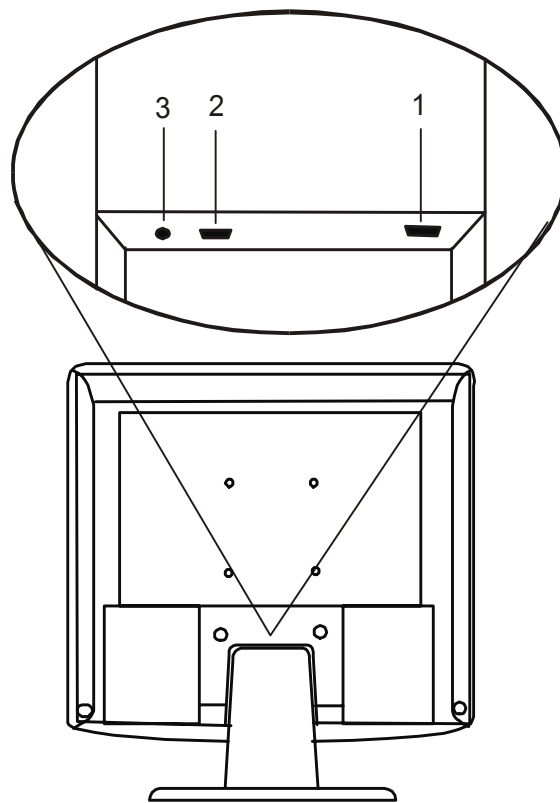
### Front View



### Back View (I)



## Back View (2): Locations of plugs & sockets



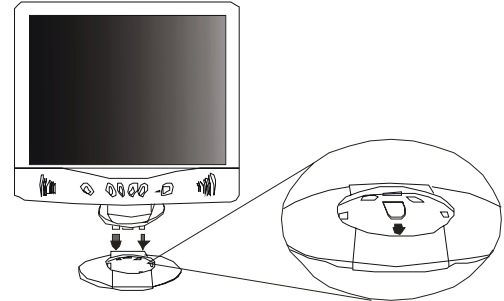
1. D-sub connector	2. Power AC input jack
3. Audio jack	

## Installation

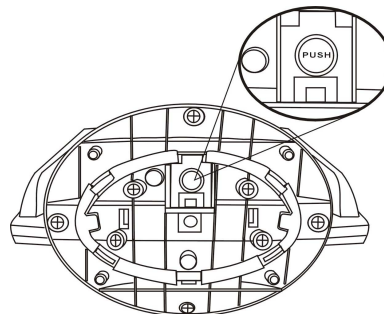
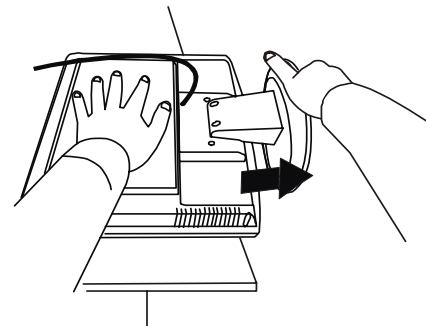
### Hardware Installation

Make sure that the computer and monitor's power are both turned off. Please follow the steps to install your LCD monitor.

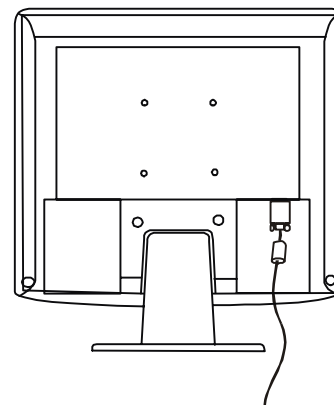
1. Place the arrow on the base and the front side of the monitor in corresponding direction. The arrow on the base indicates the front of the base. Place the monitor into the base until it locks into place. There will be a clicking sound.



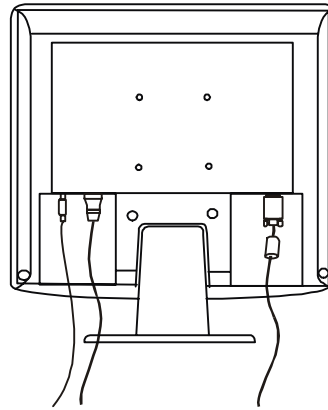
2. Place the monitor face down on a soft surface. Hold the back of the monitor with one hand. Using the other hand, press the release button on the base and push outward in the direction of the arrow to detach the base extension.



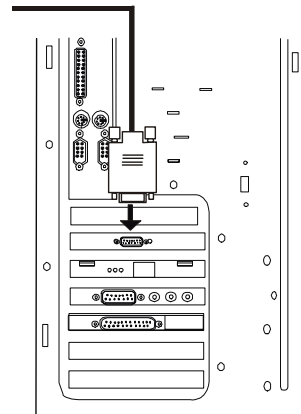
3. Connect signal cable to the LCD – monitor.



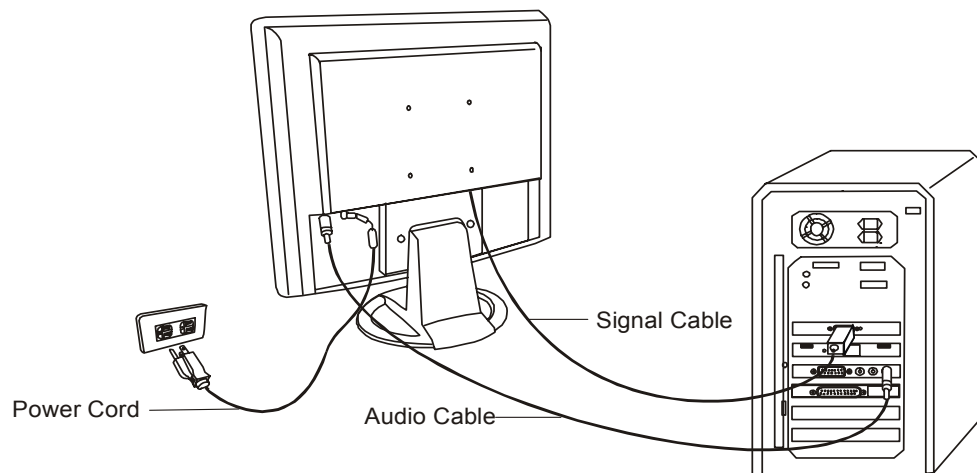
4. Connect the power cord to your LCD monitor. Then connect audio cable to the Audio Input of BenQ LCD Monitor.



5. Connect the other end of signal cable to the signal connector of your computer.



6. Connect the audio cable to your computer. Connect the power cord to an AC power socket.





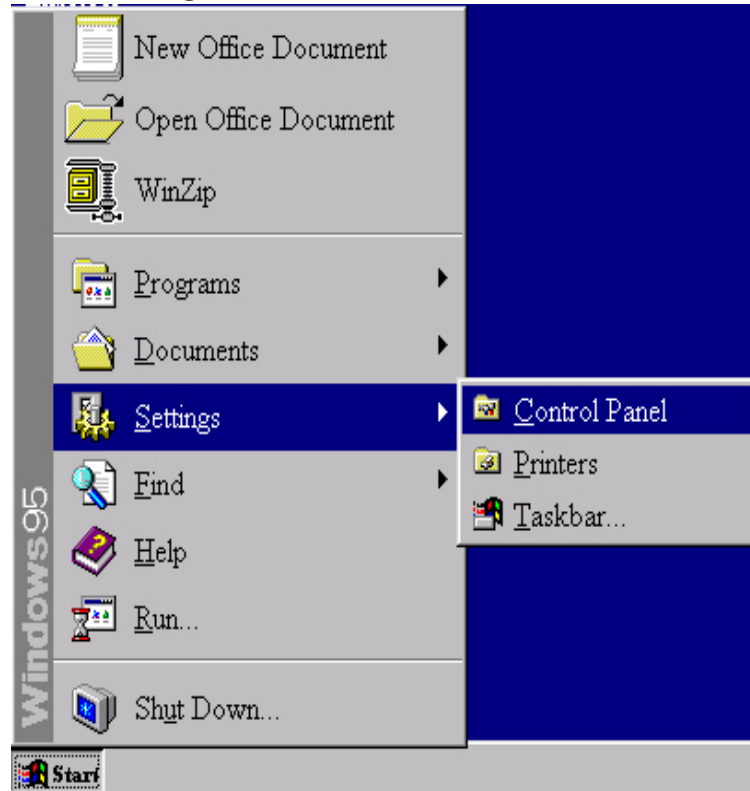
## Software Installation

### A. Microsoft® Windows® 95 / 98 / 2000 / XP

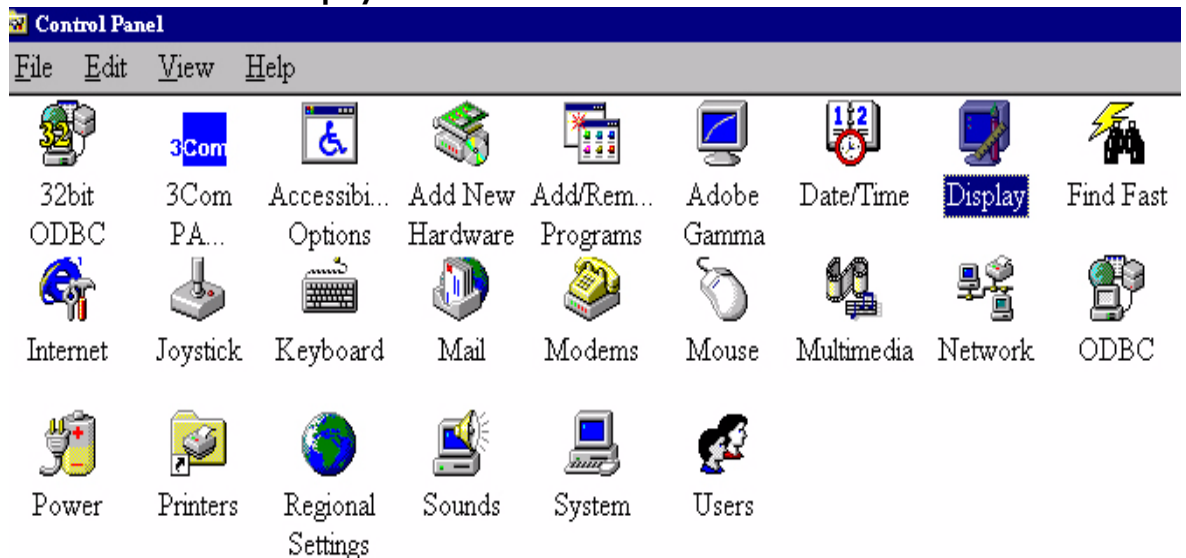
If you are using Windows 95, Windows 98, Windows 2000 or XP as an operating system, you have to set up the correct monitor driver.

**Windows 95** The first time you start Windows with a new monitor, the system will detect it and automatically install the driver for plug and play displays. To install the current driver from CD, proceed as follows:

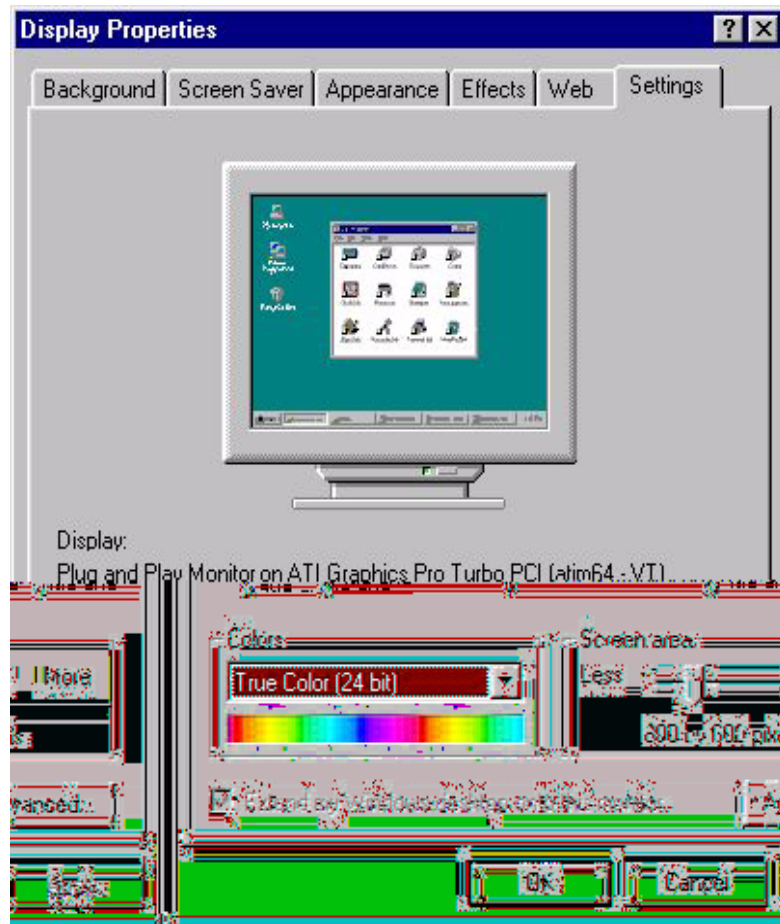
1. Insert "**BenQ LCD Monitor**" CD-ROM into your CD-ROM Driver.
2. Click "**Start**" then "**Settings**".



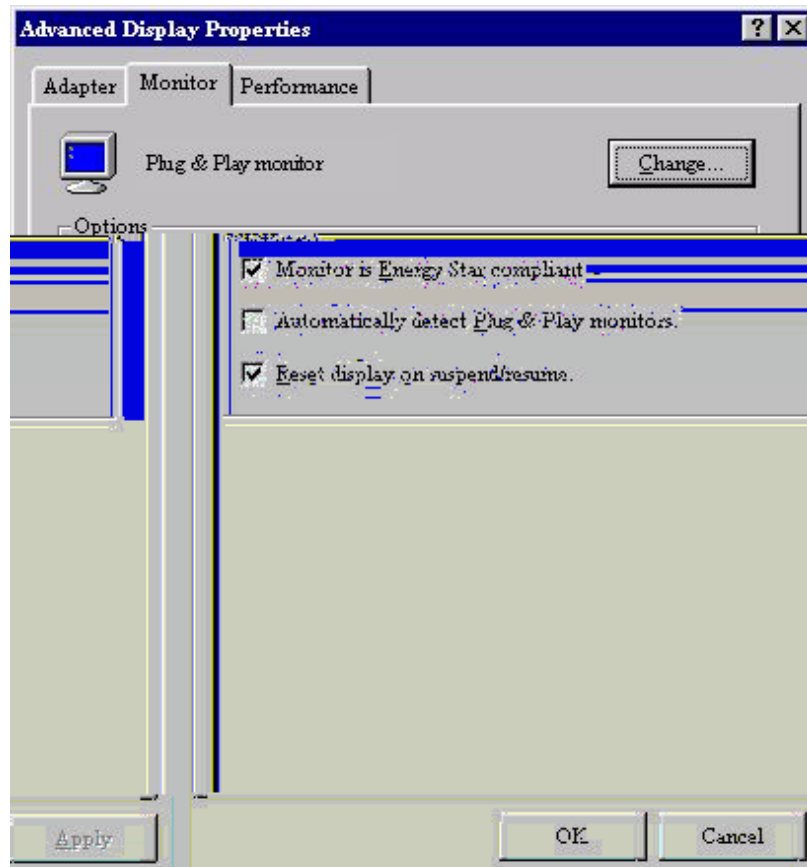
3. Double click the "**Display**" icon in the Control Panel. .



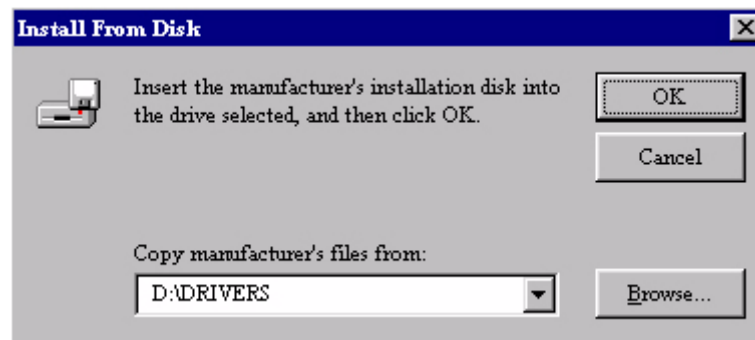
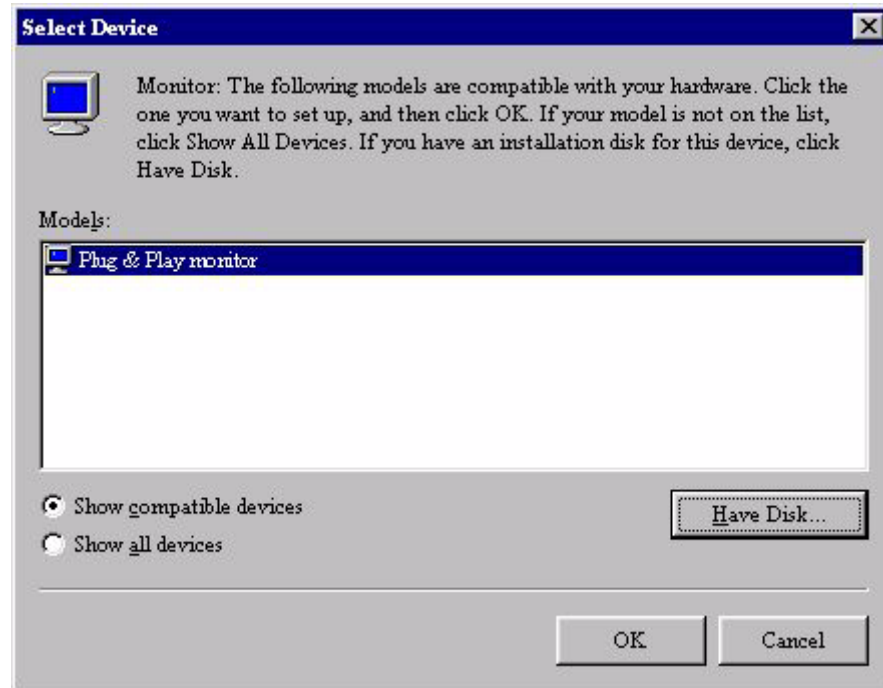
- From the “**Display Properties**” window, select the “**Settings**” tab. Click the “**Advanced Properties**” button in the bottom right corner.



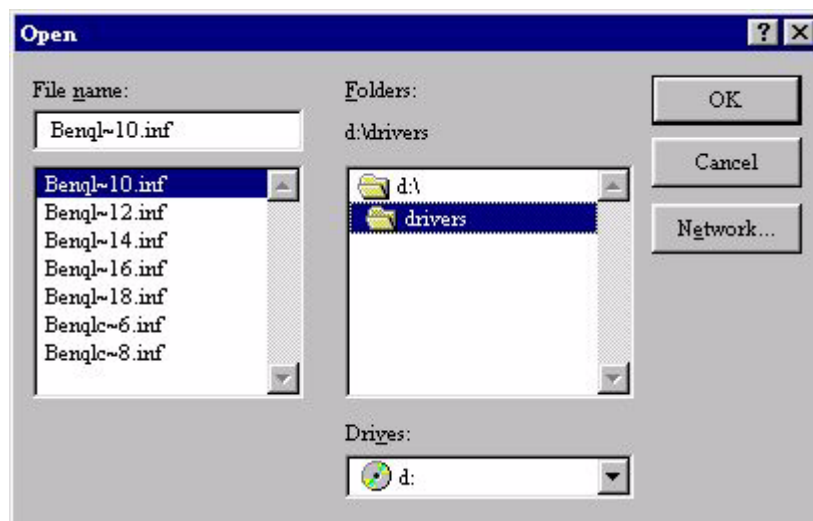
- Select the “**Monitor**” tab. Click the “**Change**” button in the top right corner.



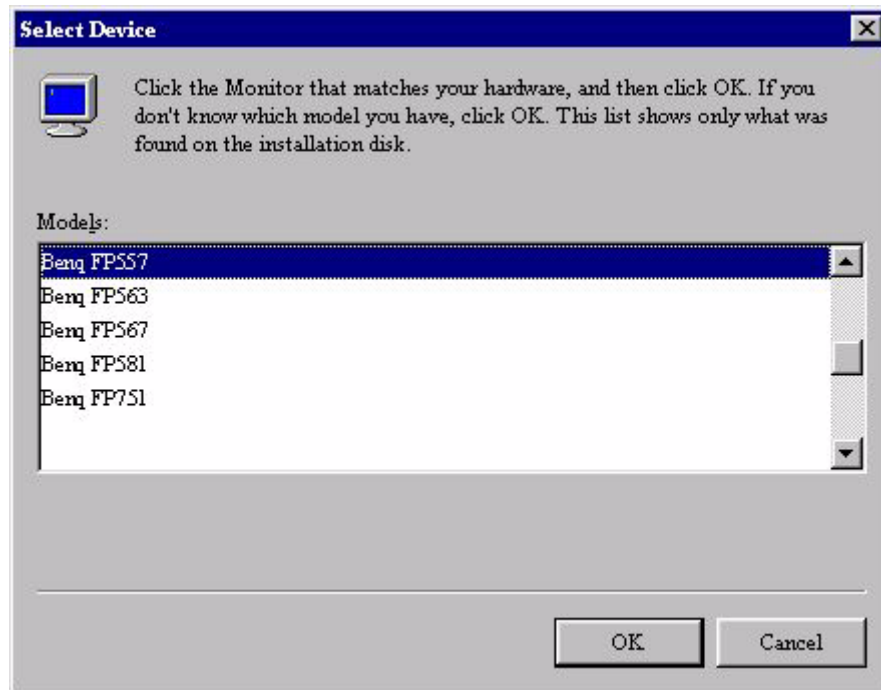
6. Now click the **"Have Disk"** button in the bottom right corner. When the next window appears, select the **"Browse"** button.



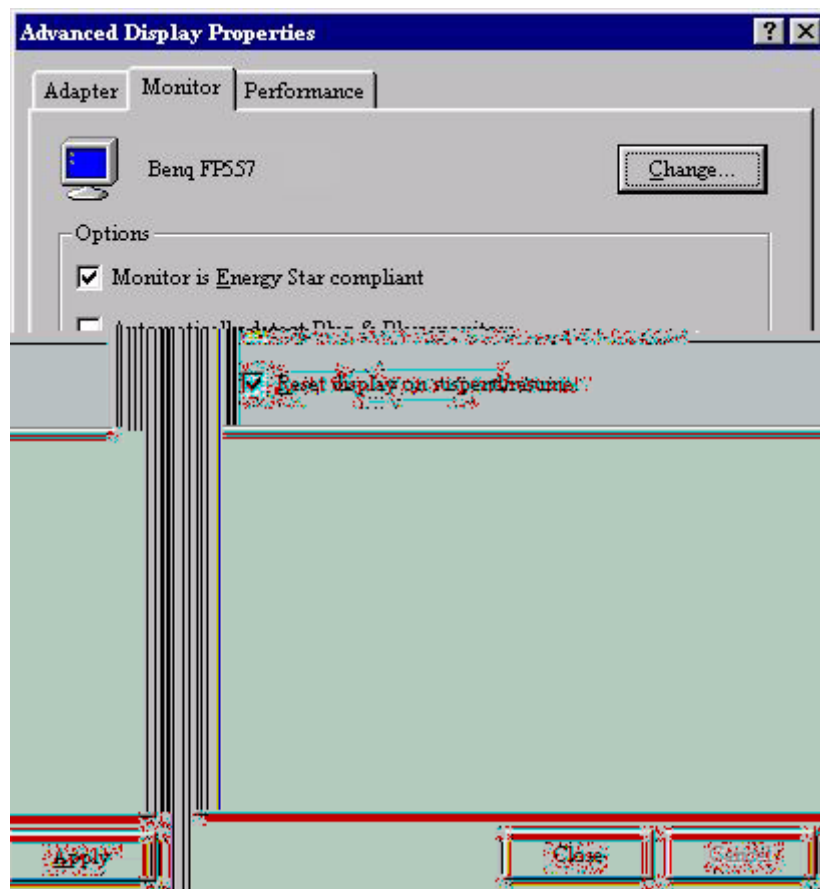
7. Insert the supplied CD into your computer. Select the CD-drive from the drop-down menu.  
 8. In the field above the drive selection, change to the **"Drivers"** folder. The current driver files are located there. Press **"OK"** and the window closes.



- By pressing “**OK**” again in the next window you will be given a list of compatible devices. Select “**FP767**” from the list and press “**OK**” again.

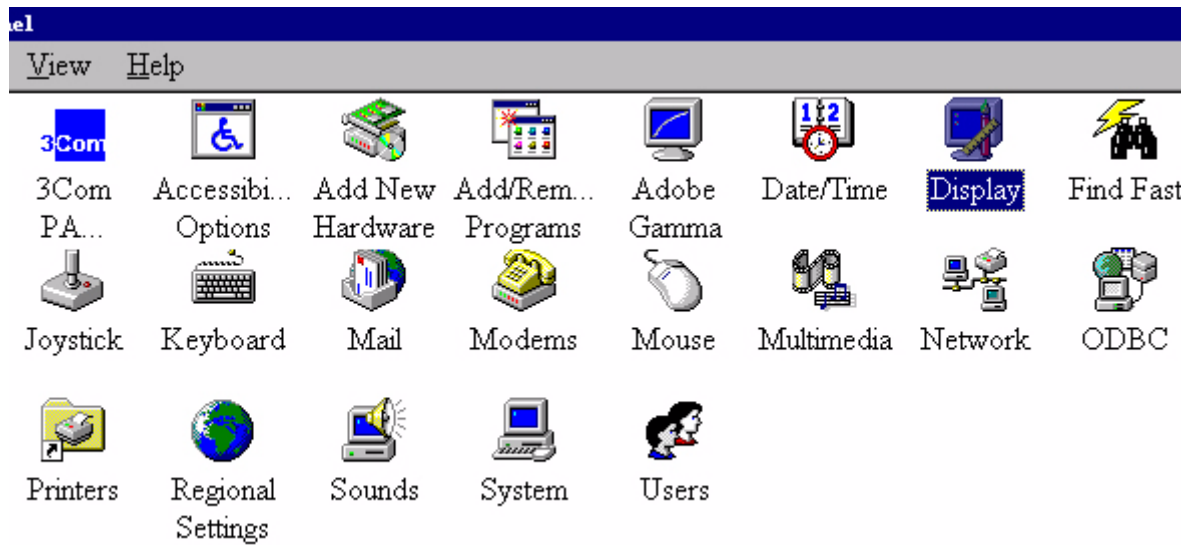


- You are now back at “**Advanced Display Properties**”. Close this window by clicking “**OK**” and confirm the following messages with “**Yes**”. Click “**OK**” and “**Yes**” again. The installation is now completed. You can close “**Display Properties**”.

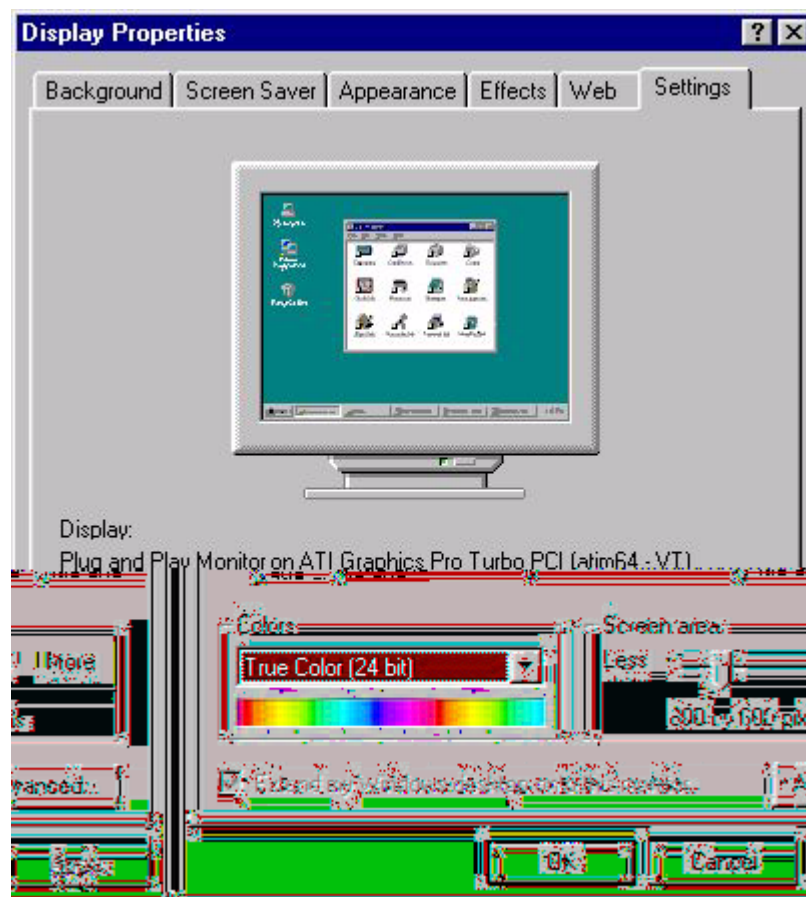


**Windows 98** To manually install or update the driver, perform the following steps: 1.

1. Open the control panel and double-click "**Display**" icon. .



2. From the "**Display Properties**" window, select the "**Settings**" tab. Click the "**Advanced...**" button in the bottom right corner. .



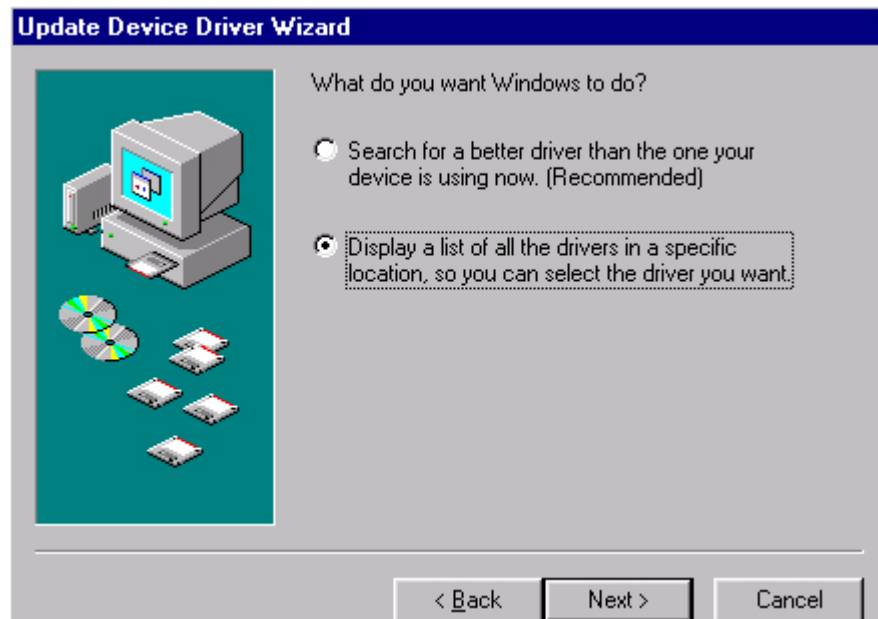
3. Select the **"Monitor"** tab. Click the **"Change"** button in the top right corner.



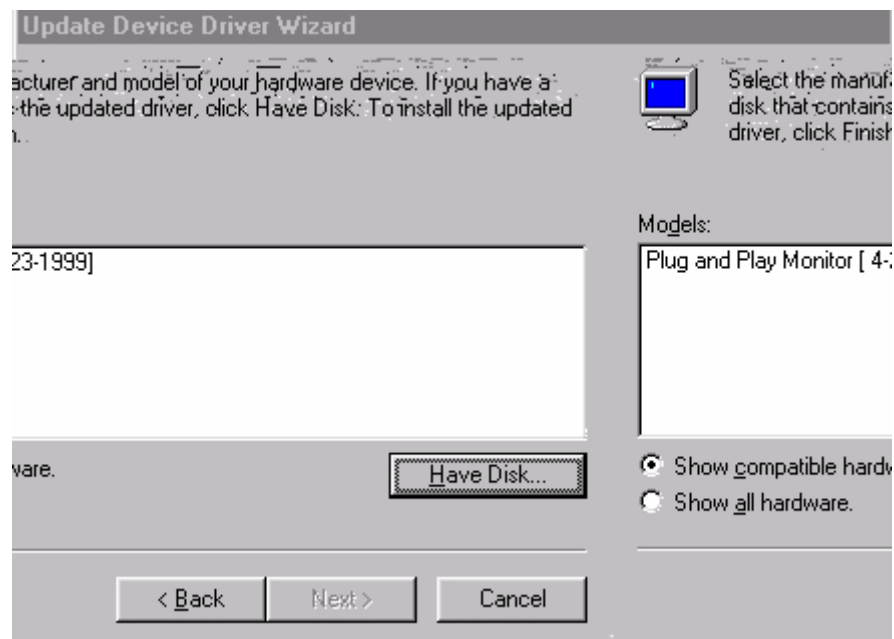
4. The **"Update Device Driver Wizard"** opens. Confirm by clicking **"Next"**.



5. Select "**Display a list of all drivers in a specific location, so you can select the driver you want.**" and press "**Next**".



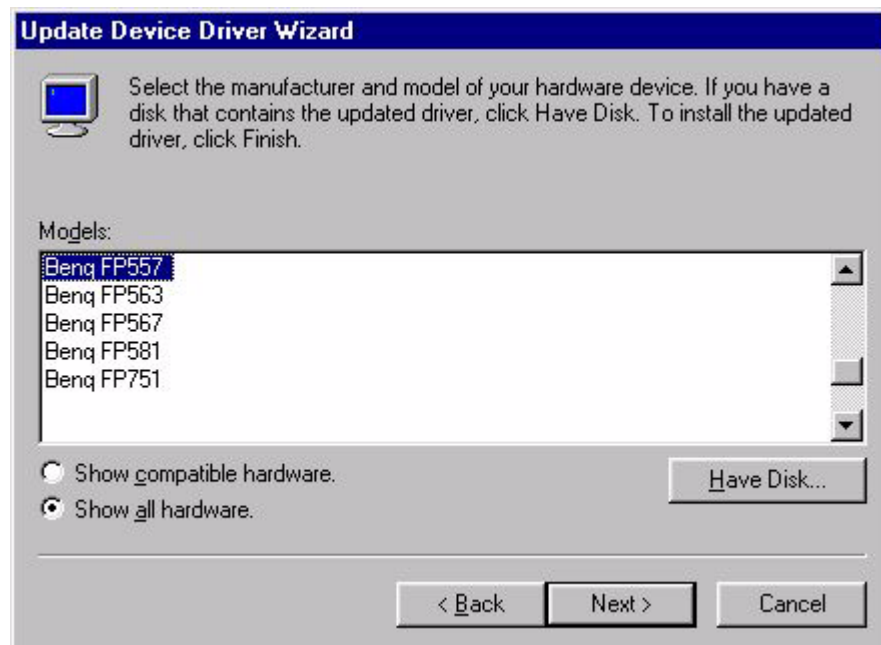
6. Now click the "**Have Disk**" button in the bottom right corner. Another window appears, select the "**Browse**" button.



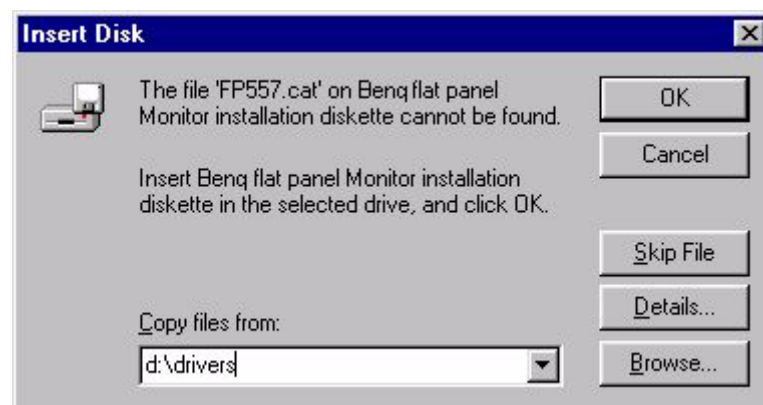
7. Insert the supplied CD into your computer. Select the CD-drive from the drop-down menu. .



8. By pressing “**OK**” again in the next window you will be given a list of compatible devices. Select “**FP767**” from the list and press “**Next**” again.



9. An “**Insert Disk**” dialogue box appears. Click “**OK**”, and then click “**Skip File.**”



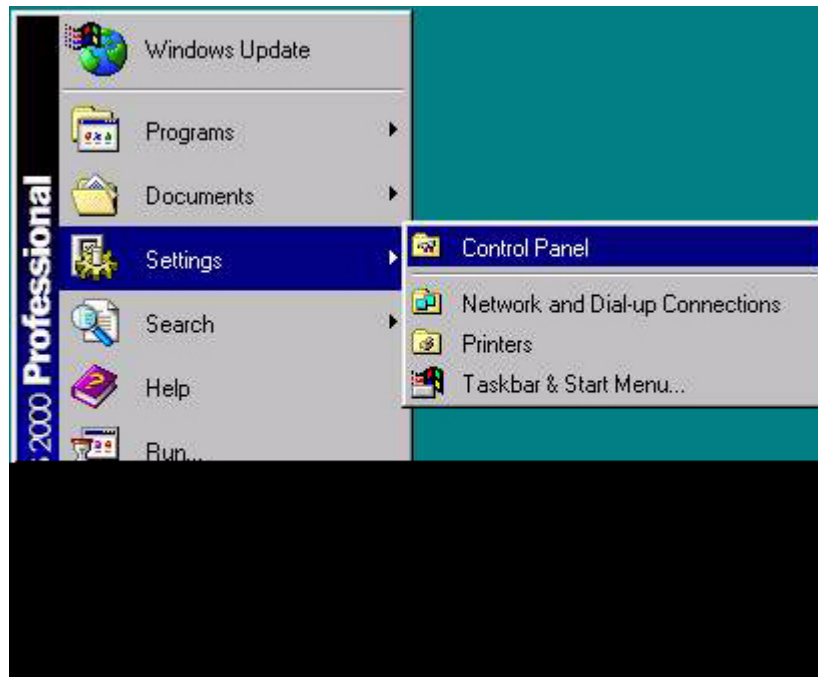


10. Close **“Update Device Driver Wizard”** by clicking **“Finish”** to complete the installation.

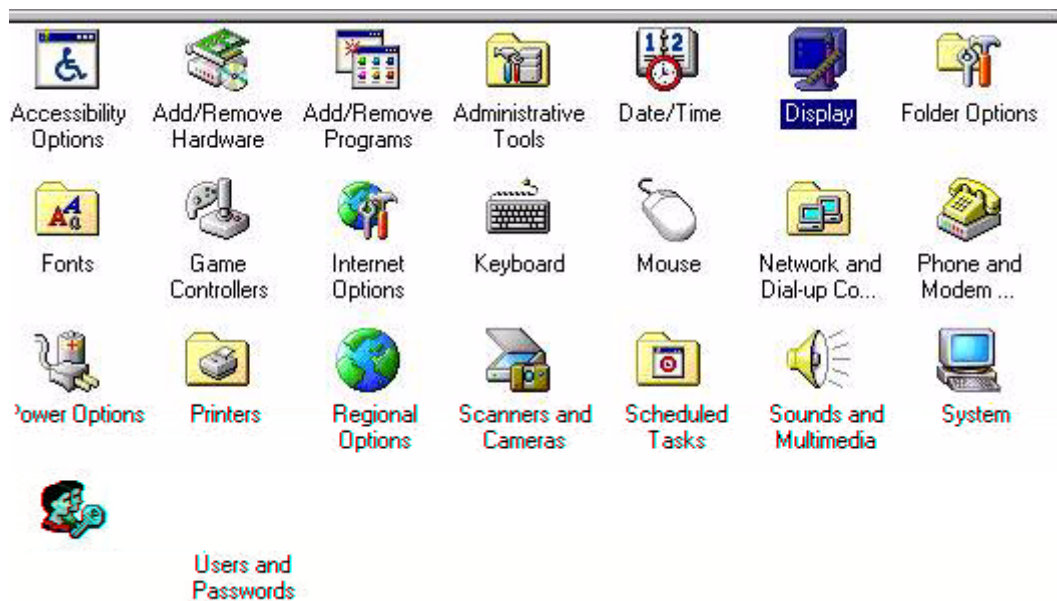


**Windows 2000** The first time you start Windows with a new monitor, the system will detect it and automatically start the “**Add New Hardware Wizard**”. Carry out the instructions beginning at step 4.

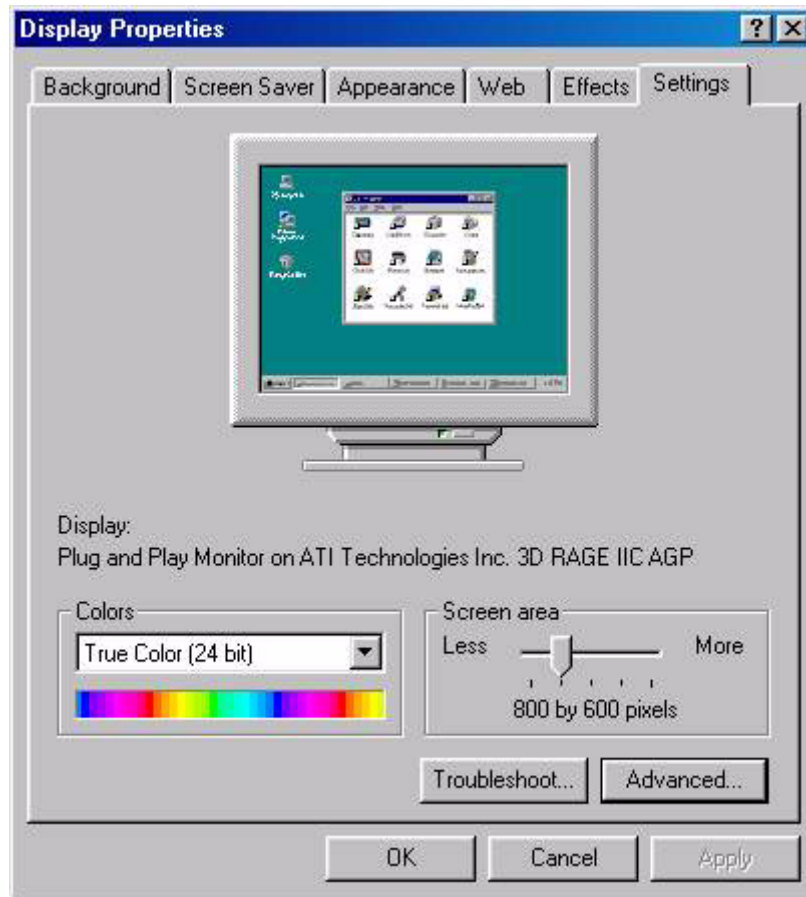
1. Insert “**BenQ LCD Monitor**” CD-ROM into your CD-ROM Driver.
2. Click “**Start**” then “**Settings**”.



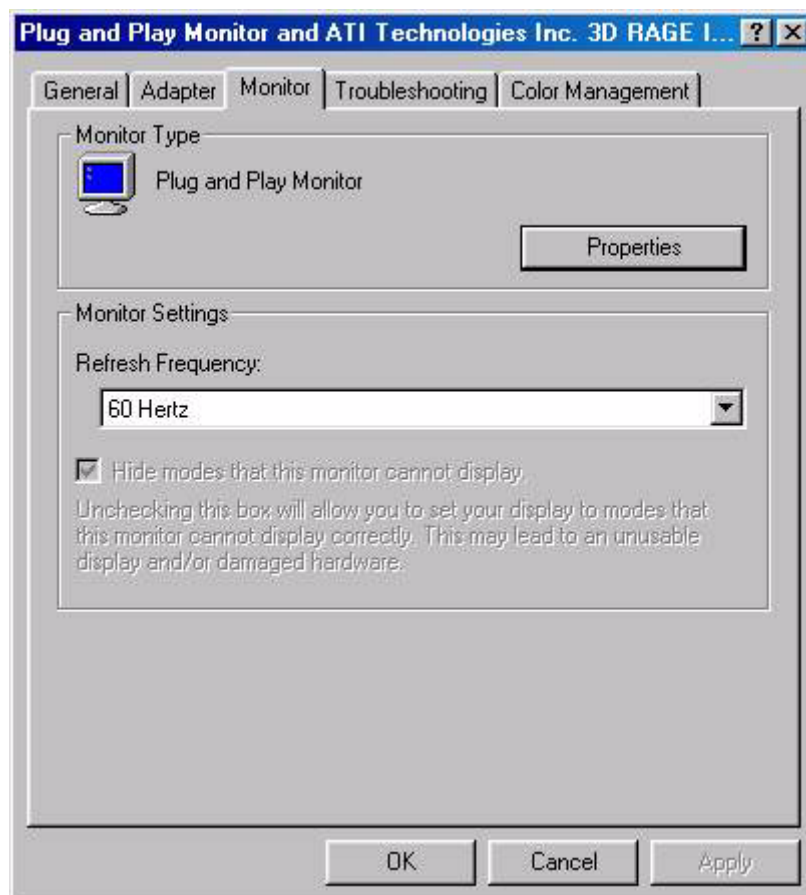
3. Open the Control Panel and double click on the “**Display**” icon.



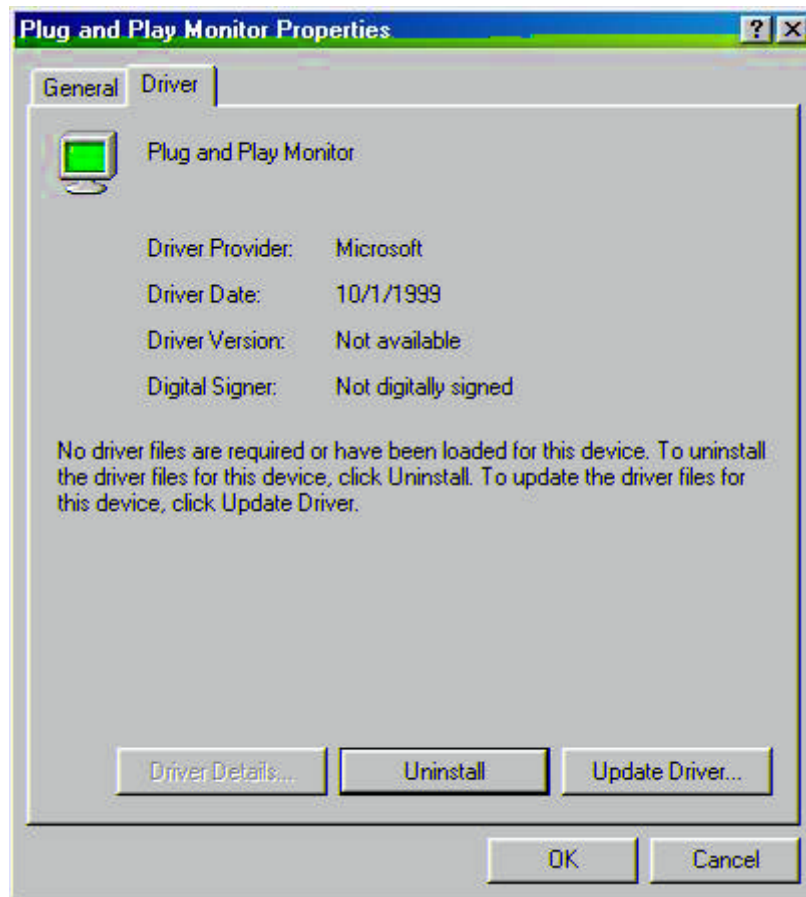
- From the **“Display Properties”** window, select the **“Settings”** tab. Click the **“Advanced...”** button in the bottom right corner.



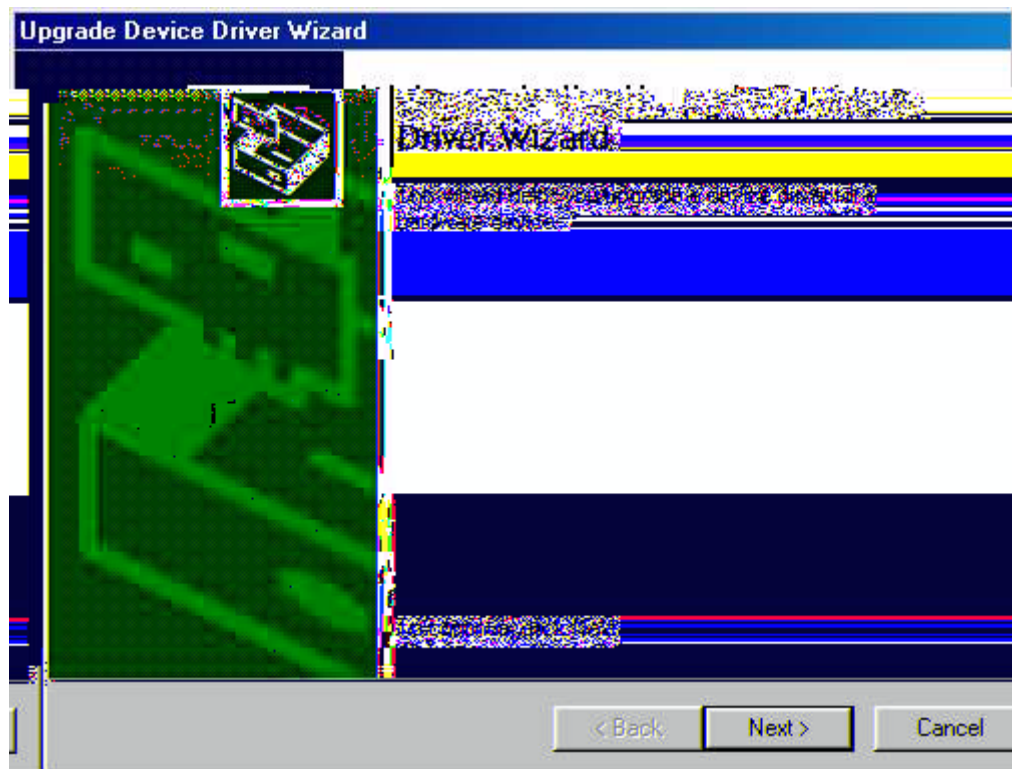
- Select the **“Monitor”** tab, then click **“Properties”**.



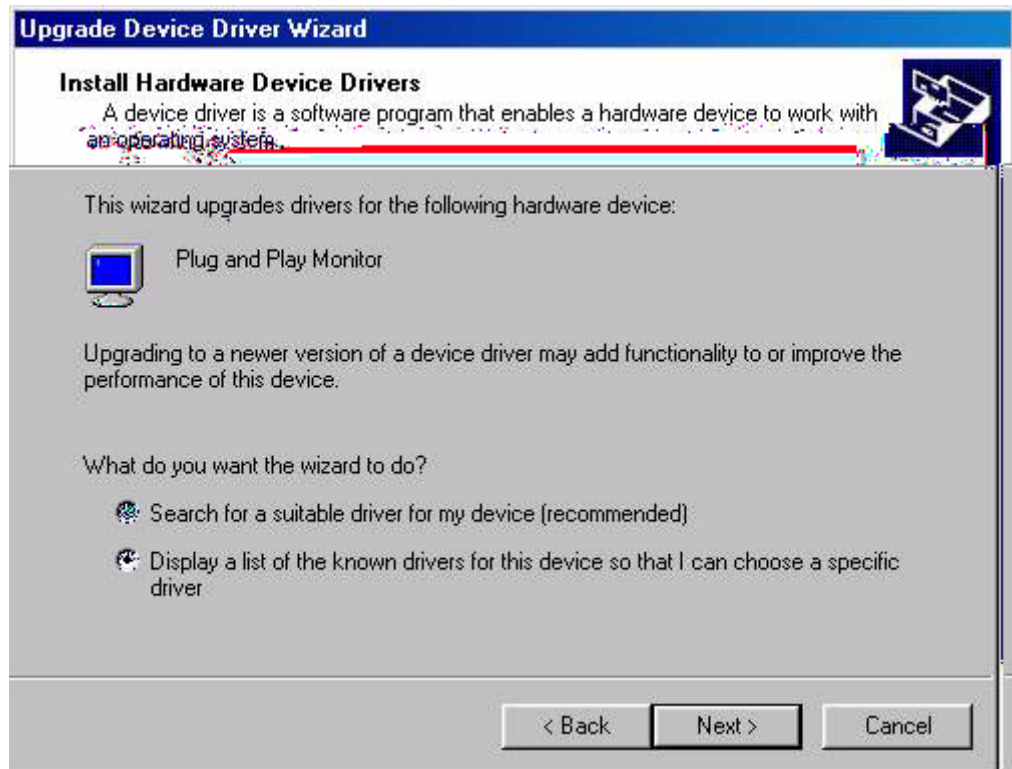
6. Select the **“Driver”** tab, then click **“Update Driver.”**



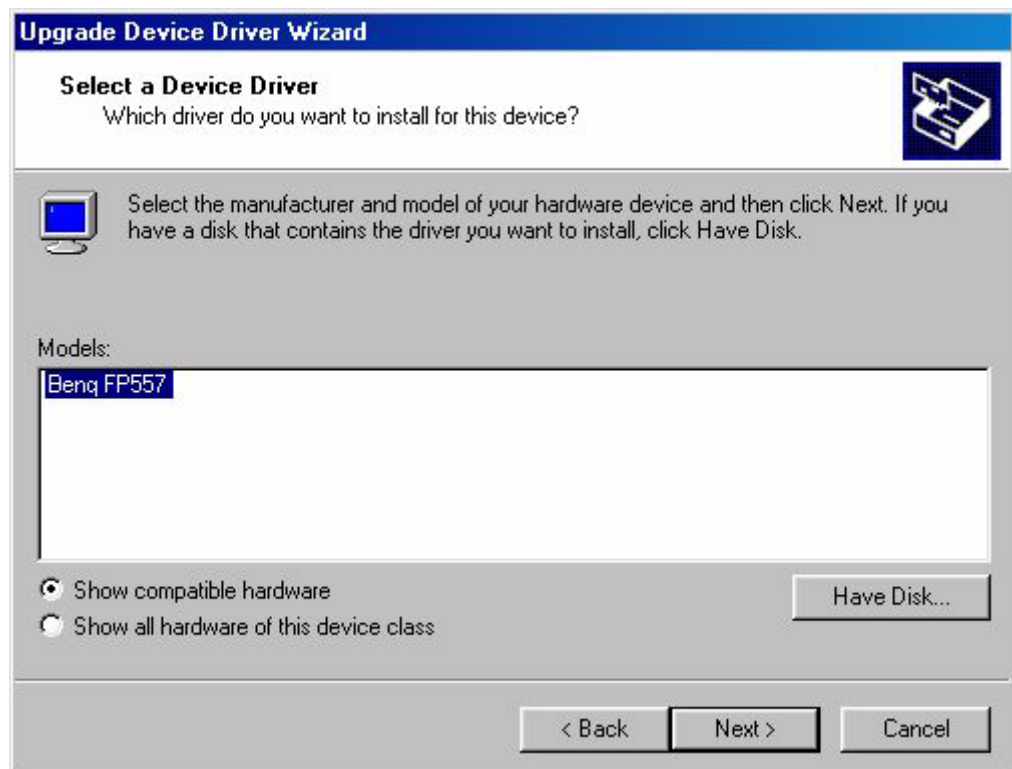
7. The **“Upgrade Device Driver Wizard”** will pop up. Then Click **“Next”**.



8. Select “**Display a list of the known drivers for this device so that I can choose a specific driver**” then click “**Next**”.

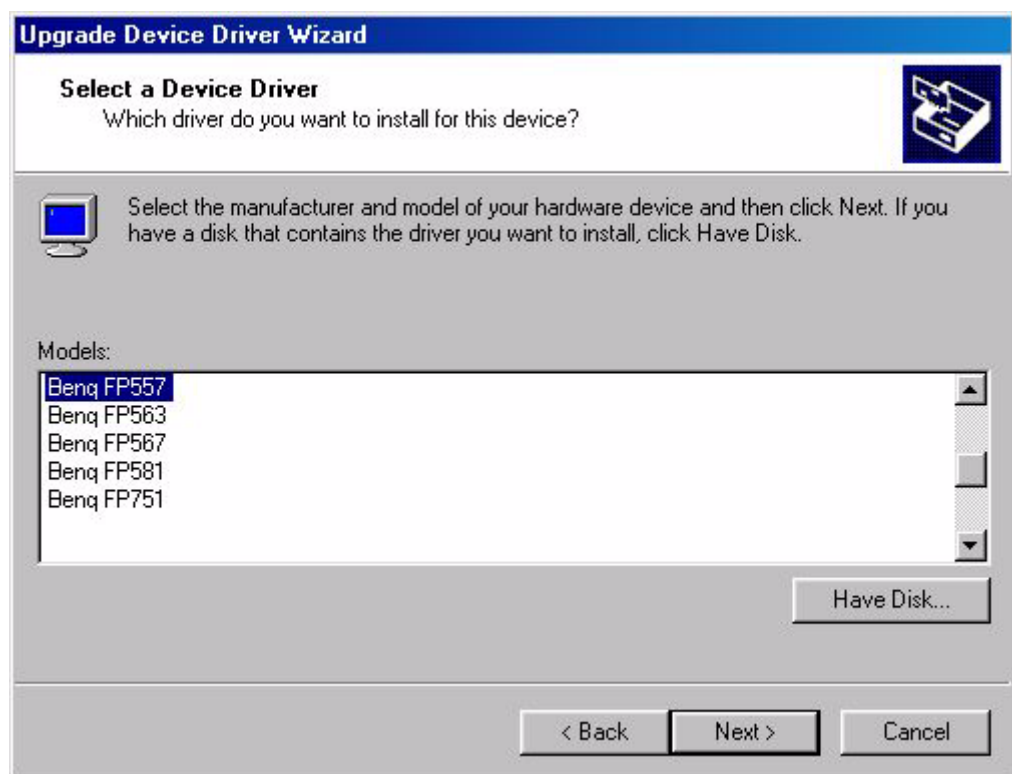


9. In the next window, click “**Have Disk**”, then “**Install From Disk**” window will pop up, click “**Browse**”, the “**Located File**” will pop up.

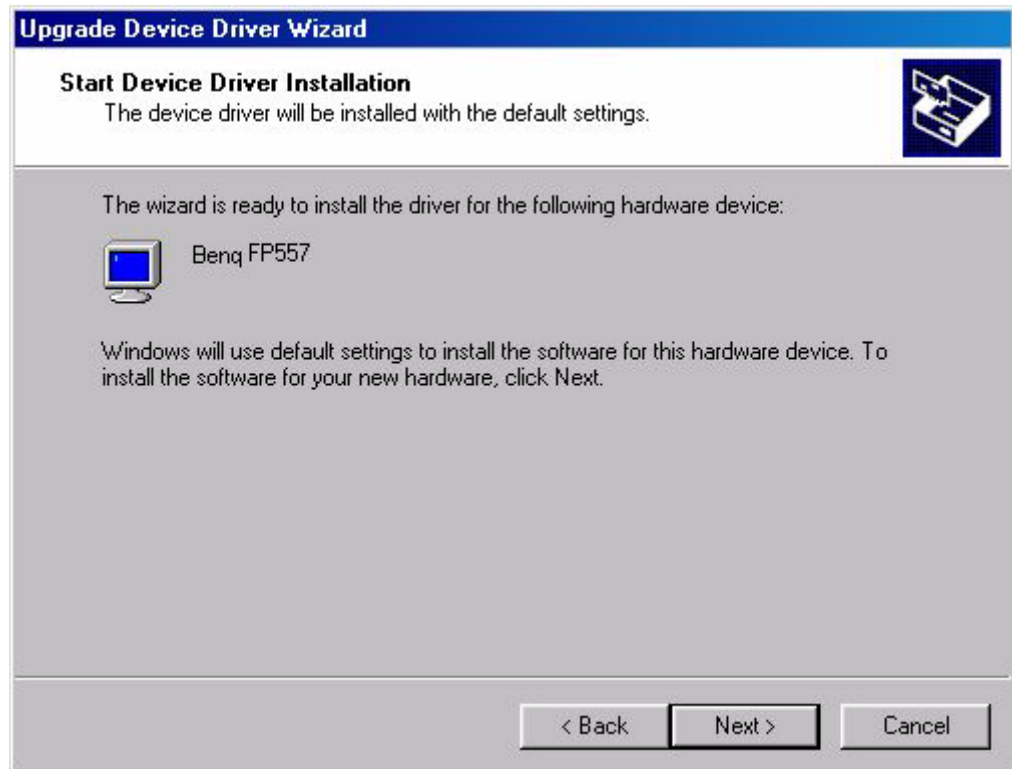




10. Scroll down and select your CD ROM Driver, then click "**Next.**" .



11. In the list of CD-ROM, select "**Drivers**" folder then click "**Open**" twice, then click "**OK**", Select the your LCD Mode (FP767) from the list in the next window then click "**Next**" twice.

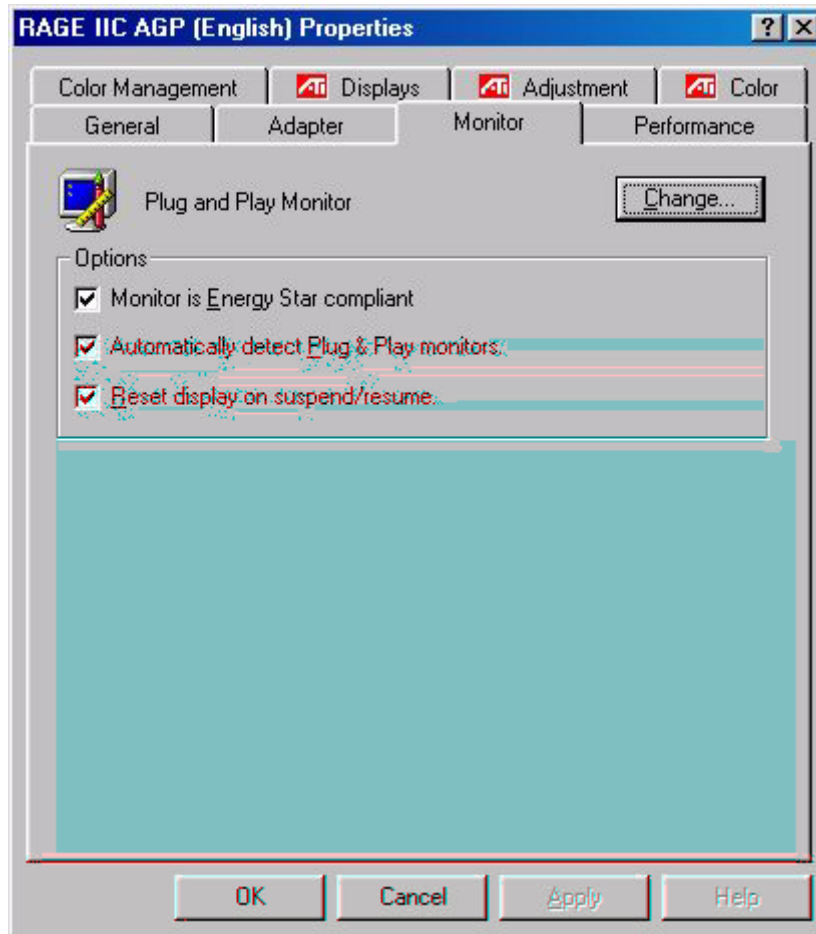


12. The new drivers are now installed to your computer.

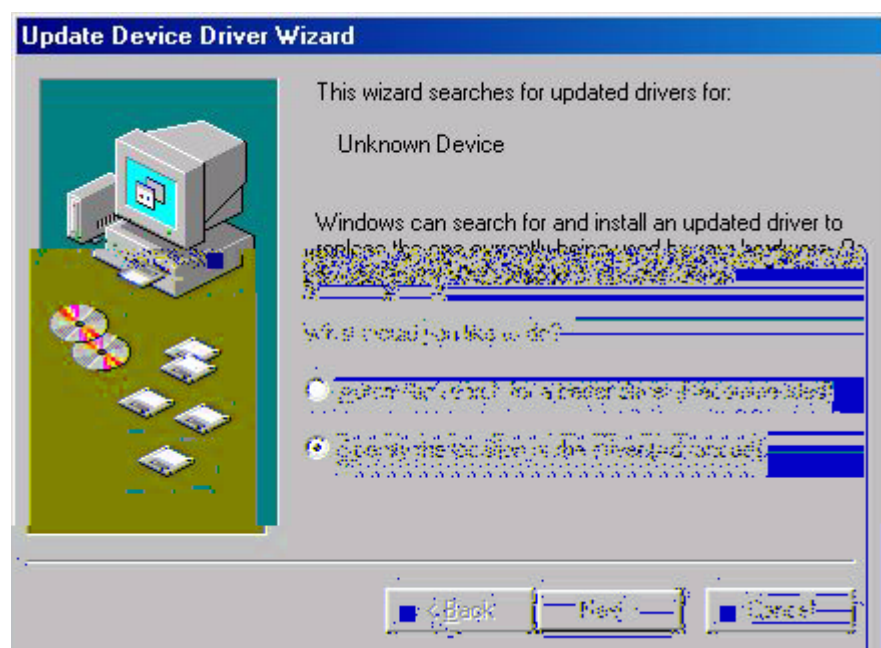


**Windows ME** To manually install or update the driver, perform the following steps:

1. Click **“Start”**, **“Settings”**, **“Control Panel”** and then double-click **“Display”**.
2. In the Display Properties window, click the **“Settings”** tab and click **“Advanced...”**.
3. Click the **“Monitor”** tab and then click **“Change”**.

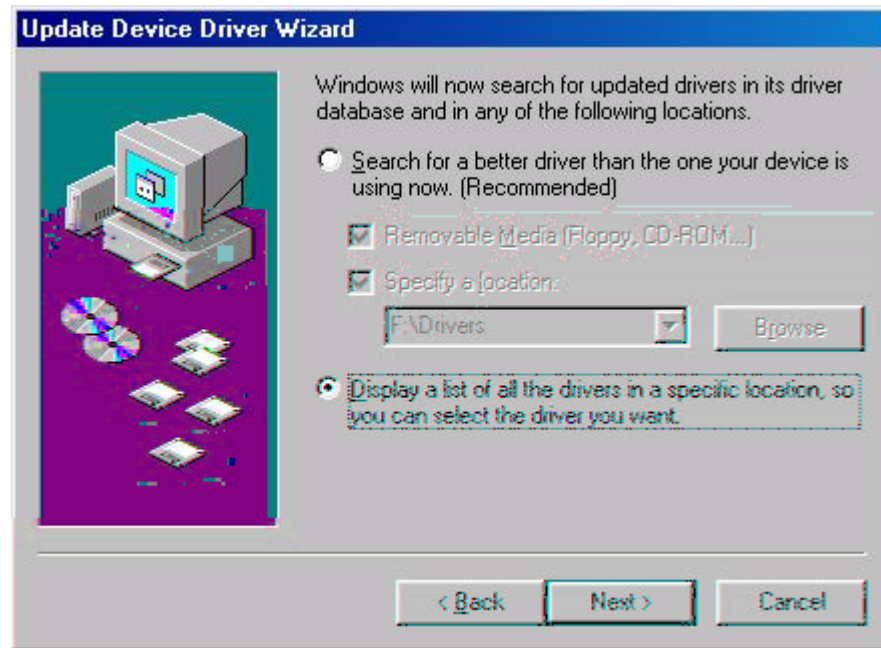


4. **“Update Device Driver Wizard”** dialogue box appears. Choose **“Specify the location of the driver (Advanced)”** and then click **“Next”**.

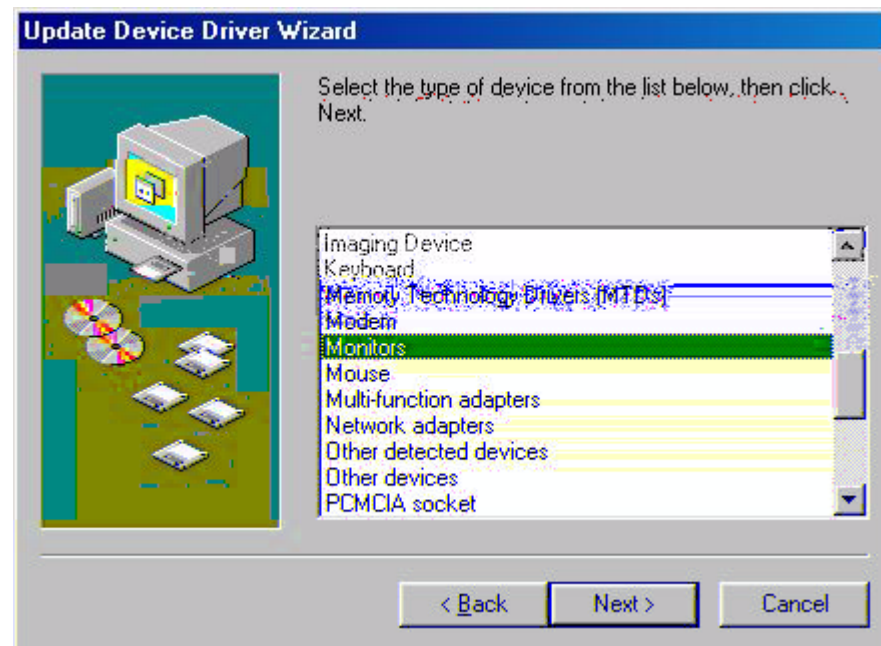




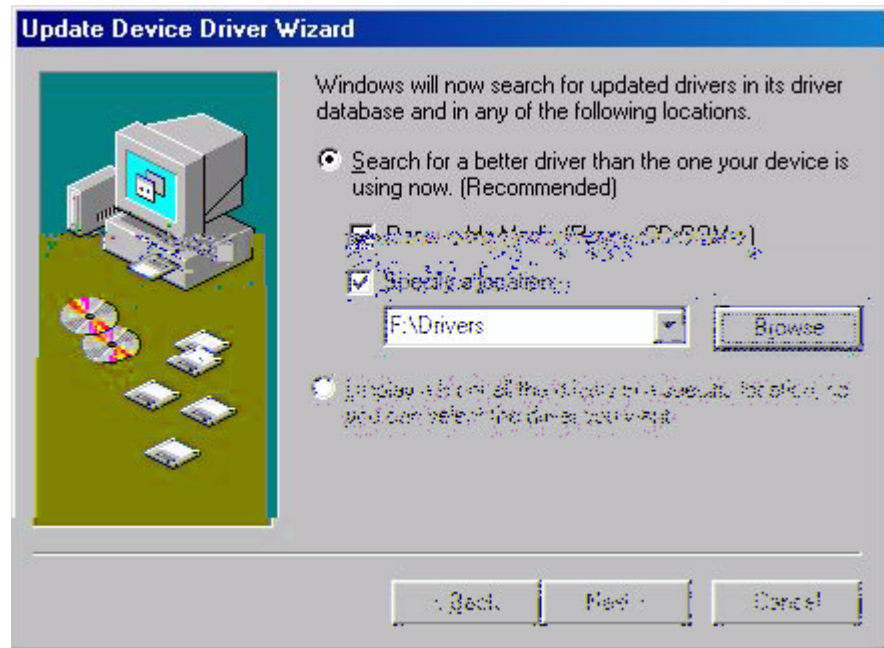
5. Choose **“Display a list of all the drivers in a specific location, so you can select the driver you want”** then click **“Next”**.



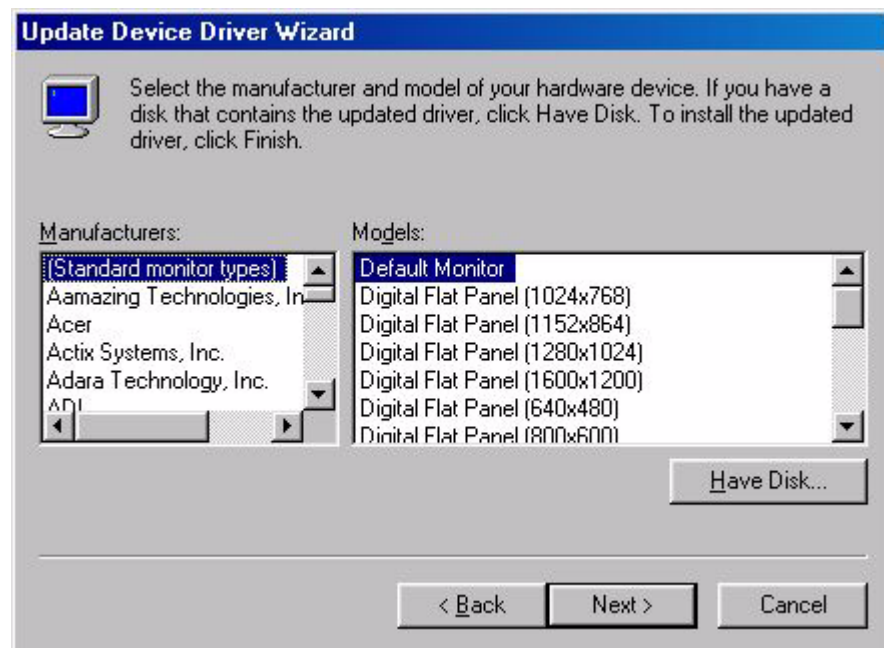
6. Choose **“Monitors”** from the list, then click **“Next”**.



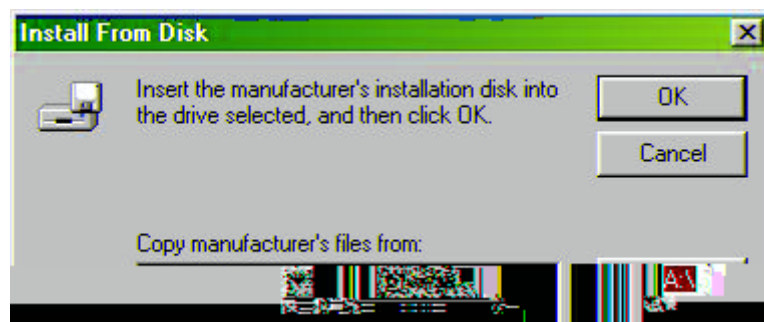
7. Choose “**Display a list of all the drivers in a specific location, so you can select the driver you want.**”.

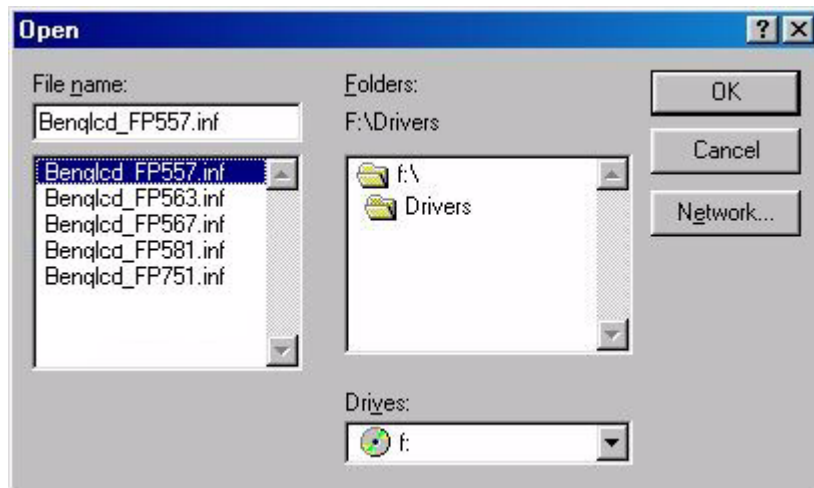


8. Click “**Have disk**” and then click “**Browse...**”.

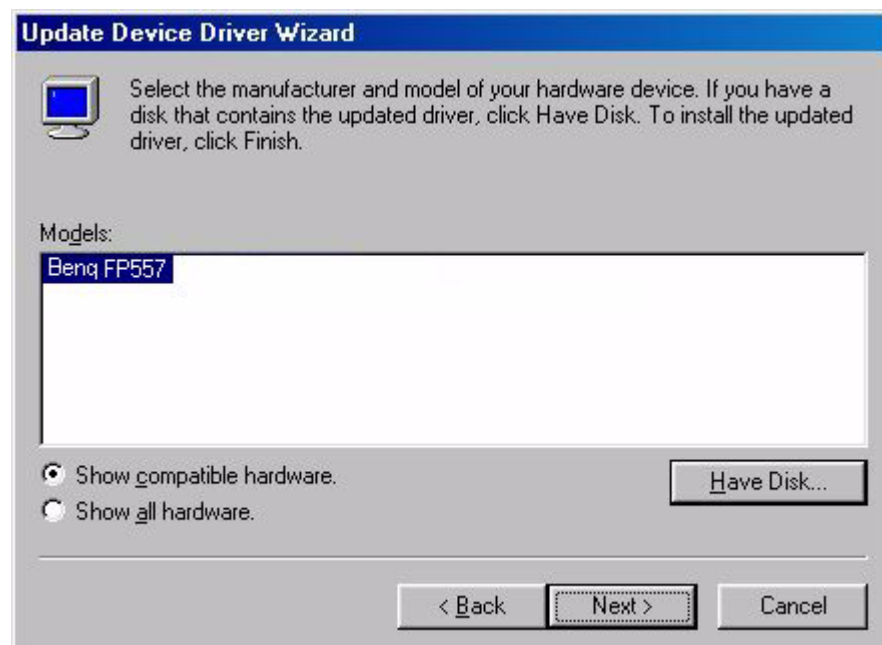
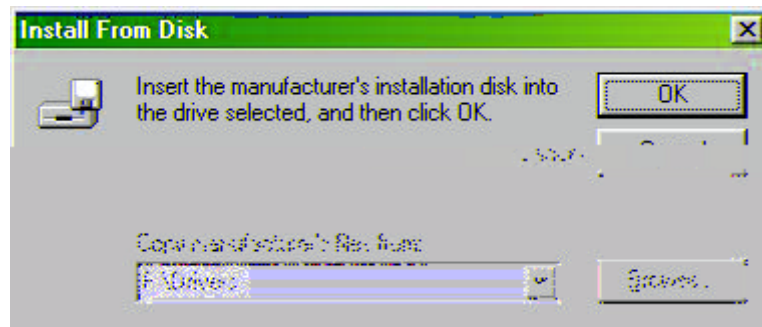


9. Insert “**BenQ LCD Monitor’s CD**” into your CD-ROM and type d:\ (change the driver letter to match your CD-ROM driver if it is not drive D). Enter “**Drivers**” folder to select the model from the list left. Click “**OK**”.





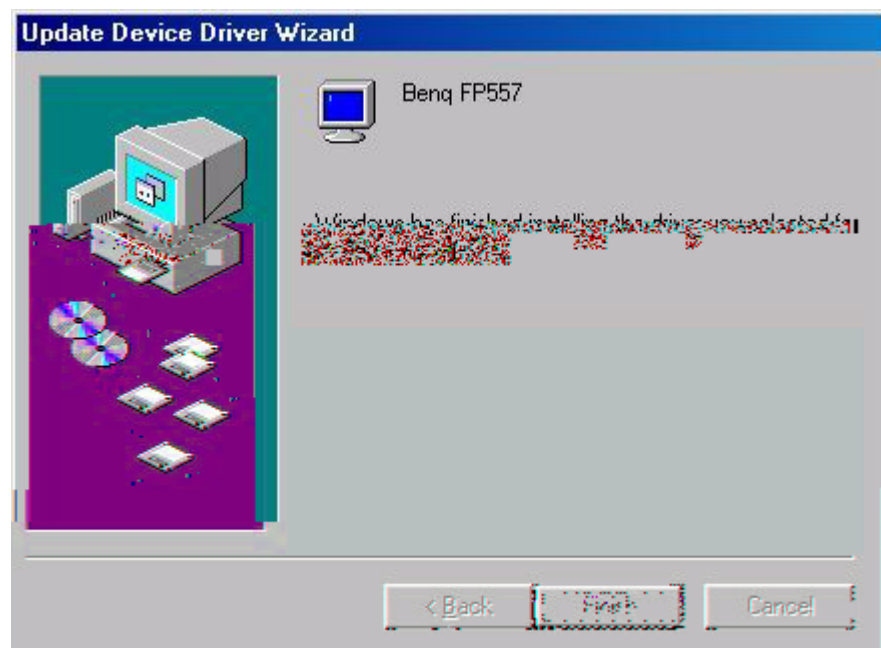
10. Click **“OK”** on the **“Install From Disk”** window. The dialogue box **“Update Device Driver Wizard”** appears. Choose the model from the list, then click **“Next”**.



11. Click "**N**ext".

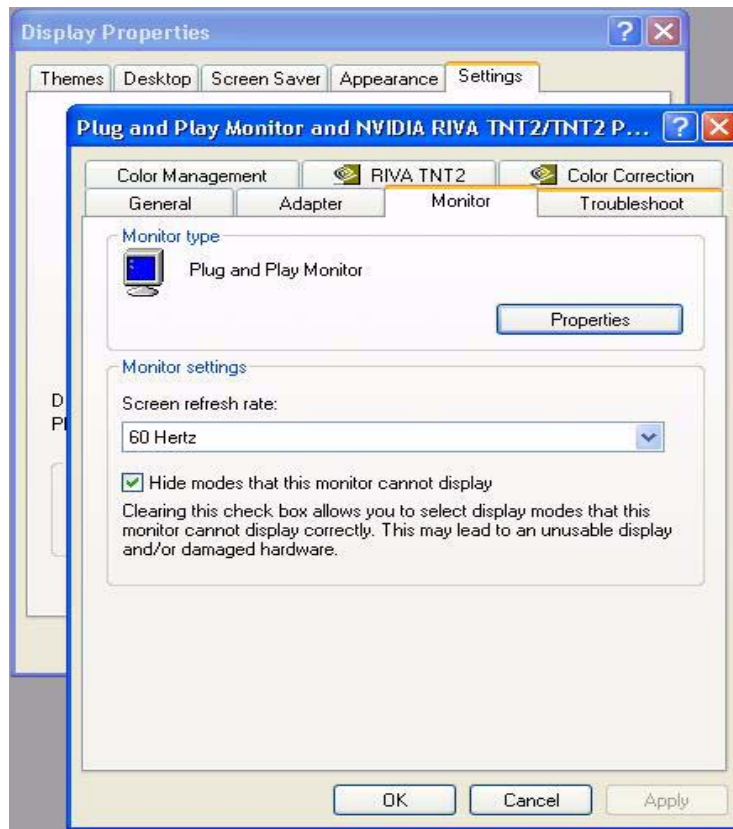


12. Click "**F**inish" to complete the installation.

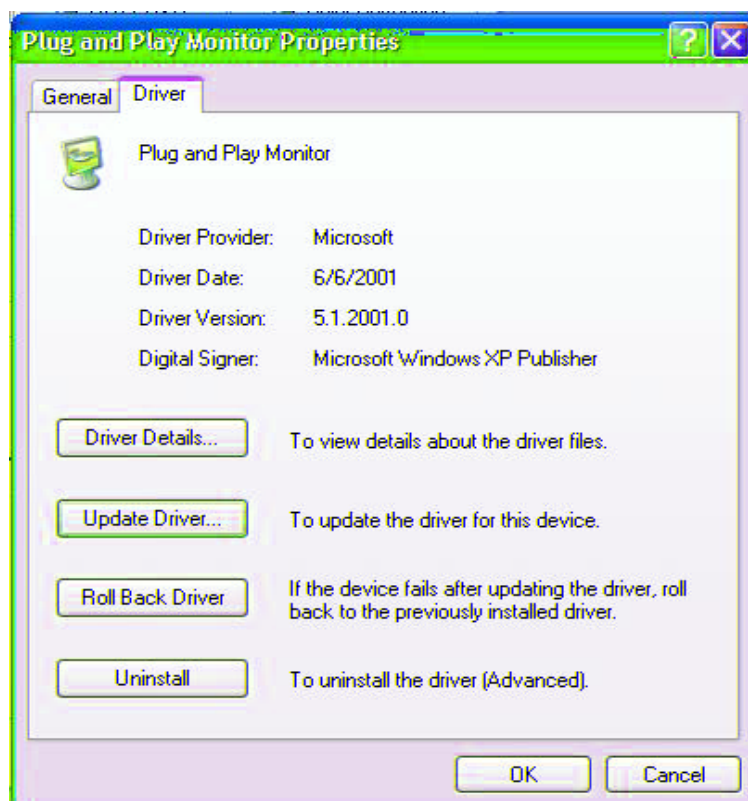


## Windows XP.

1. Right click mouse on the desktop and choose “**Properties**”. Select “**Settings**” tab and click the “**Advanced**” button. A small window will pop up. Select the “**Monitor**” tab in the new window and then click “**Properties**”.



2. Select “**Driver**” tab and then click “**Update Driver...**”

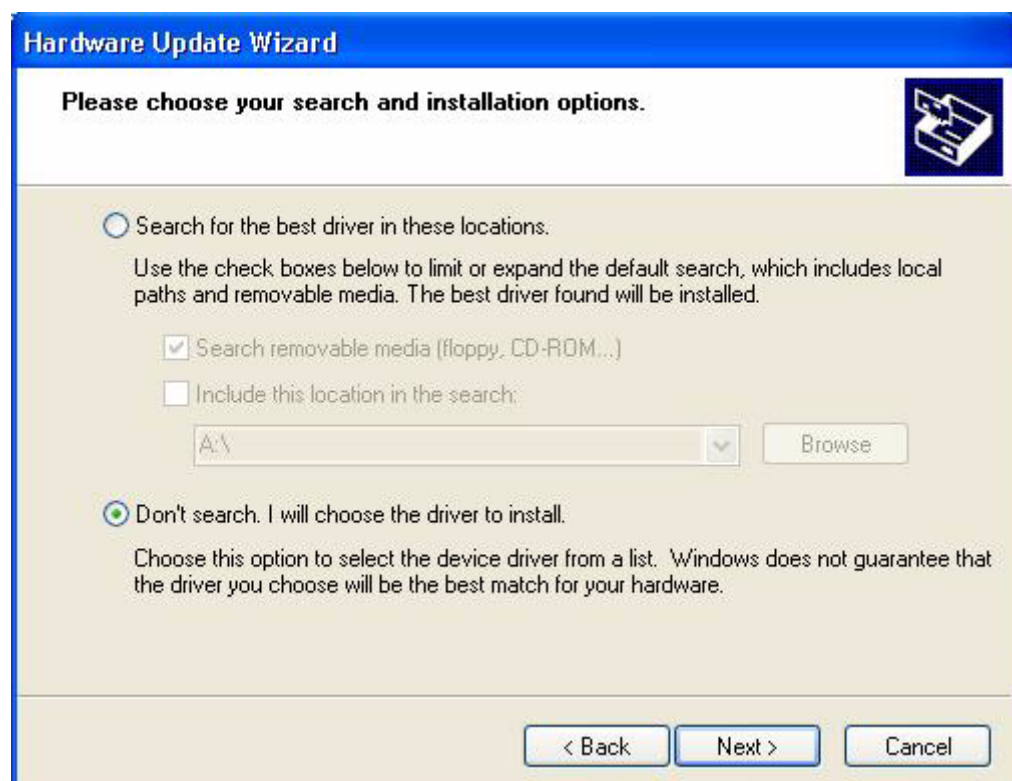




3. The **"Hardware Update Wizard"** will pop up. Then click **"Next"**.



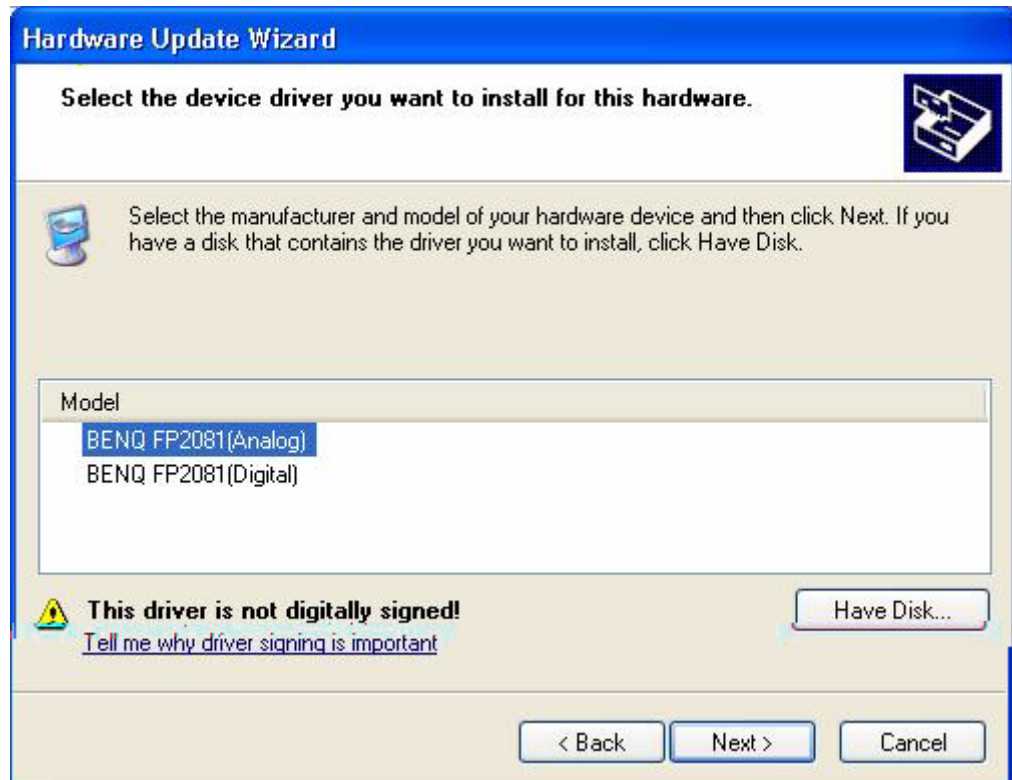
4. Select **"Don't search. I will choose the driver to install"** and then click **"Next"**.



5. In the next window, click “**Have Disk...**”, and then “**Install From Disk**” window will pop up. Click “**Browse**”. The “**Locate File**” window will pop up.



6. Select your driver and then click **“Next”**.



7. The new drivers are now installed to your computer. Click **“Finish”** to exit installation.

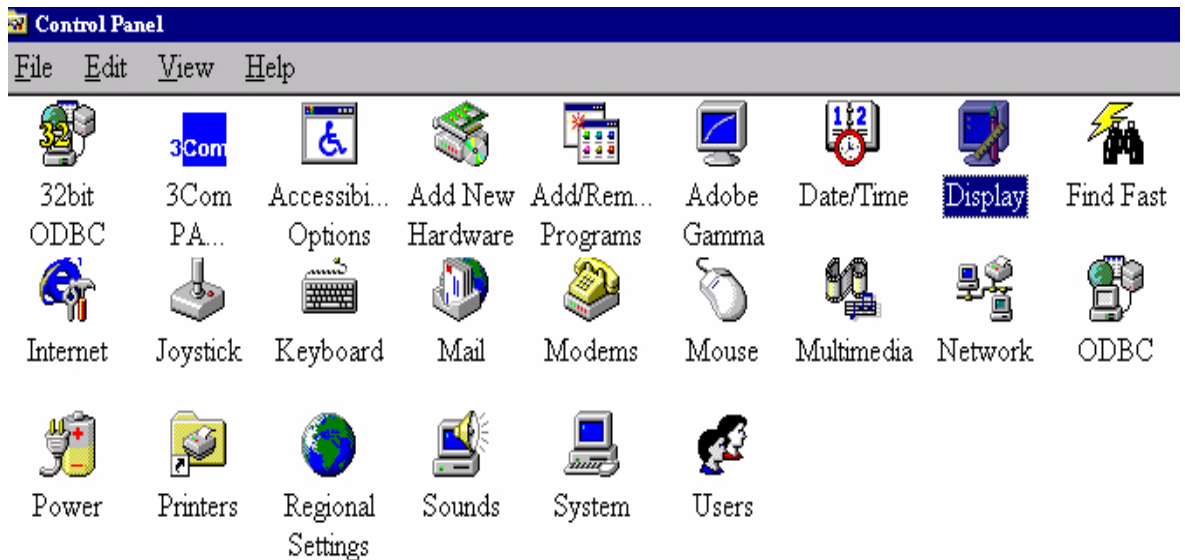




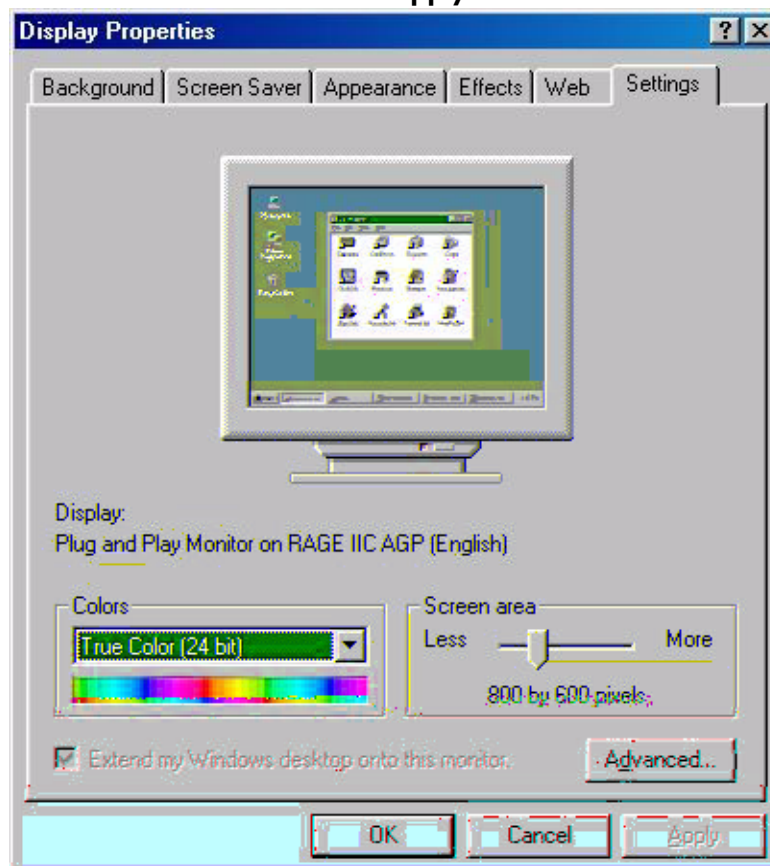
## B. Choosing the best resolution

Due to the technology of an LC display, it always provides a fixed resolution. For the FP767 this is a resolution of 1280x1024. This is called the "Native Resolution", which also represents the maximal resolution. Lower resolutions are displayed on a full screen through an interpolation circuit. Flaws do occur with the interpolated resolution compared to the native resolution. If you want to have all the advantages of LCD technology you must use the native resolution. Using Windows 95/ 98/ 2000/ XP you can change the resolution as follows:

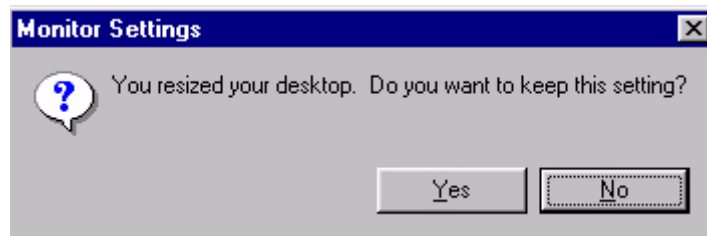
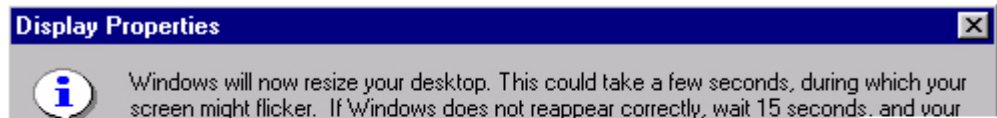
1. Double-click the "**Display**" icon in the Control Panel.



2. From the "**Display Properties**" window, select the "**Settings**" tab. You can alter the resolution by using the slider on the right-hand side.
3. Select a resolution of 1024x768. Then click "**Apply**."



- In the subsequent windows, press "OK" and "Yes."



- You can now close "Display Properties."

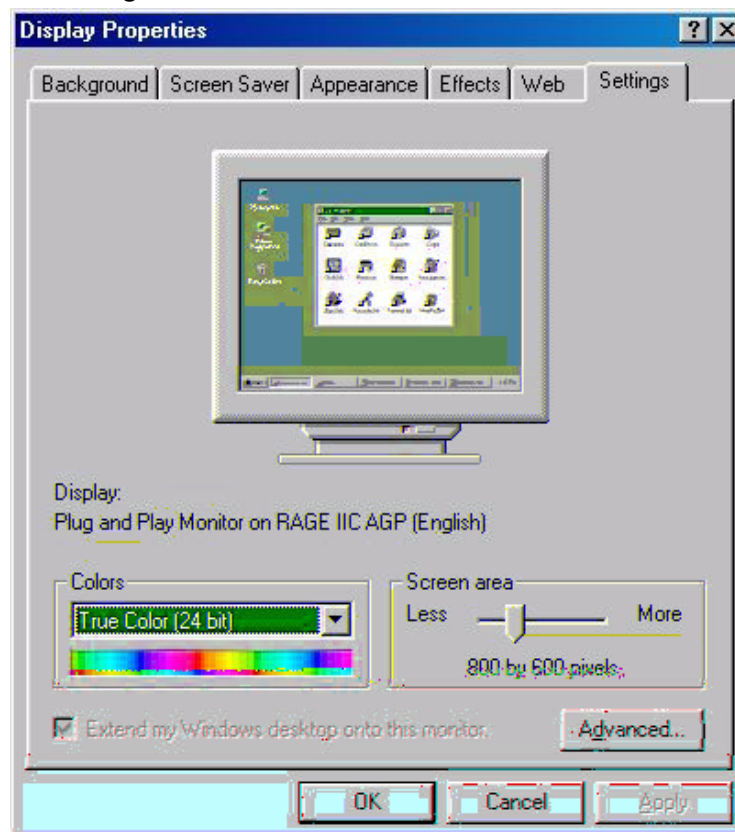
## C. Refresh Rate Selection

There is no need to choose the highest possible refresh rate on a LC display. It is not technically possible for an LC display to flicker. Even at a refresh rate of 60 Hz you will get an absolutely flicker-free image. More important is that you make sure that you use one of the factory modes. In contrast to a modern CRT monitor, which is a multiscan monitor, the LC display is a multi-frequency monitor. This means, the best results are only obtained by using the factory modes. You will find a table with the factory modes in this user's guide. For the native resolution of 1280x1024, these, for example, are 60, 70 and 75 Hertz, not 72 Hz; however, in Windows 95/ 98/ 2000/ XP you can change the refresh rate as follows:

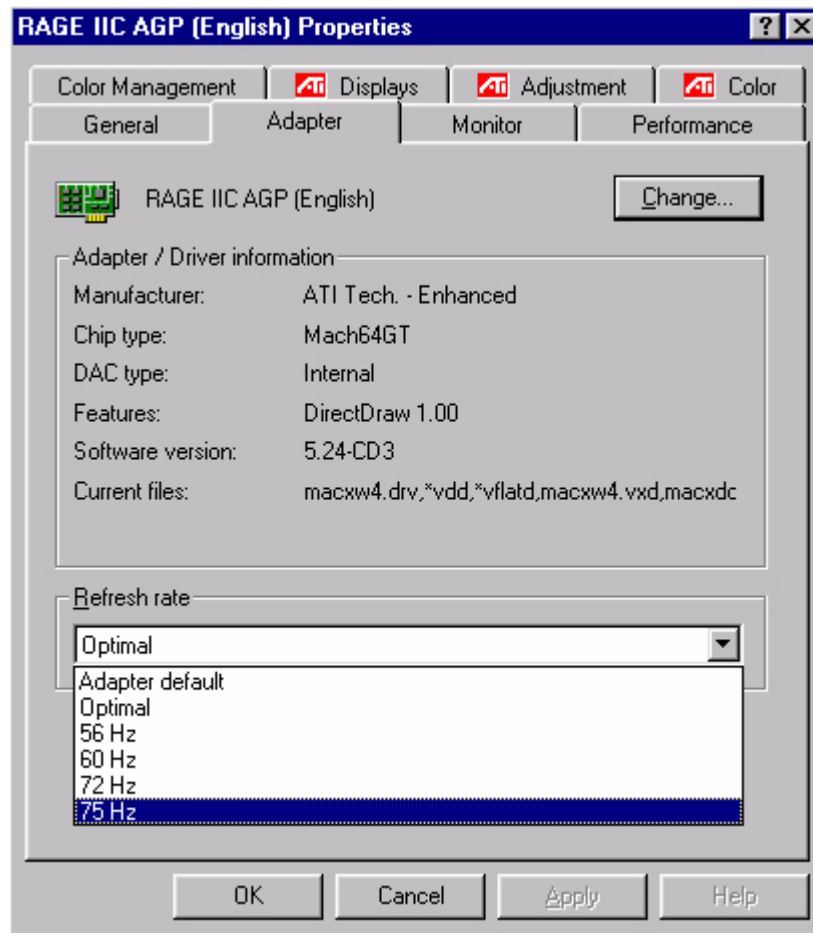
1. Double click the "**Display**" icon in the Control Panel.



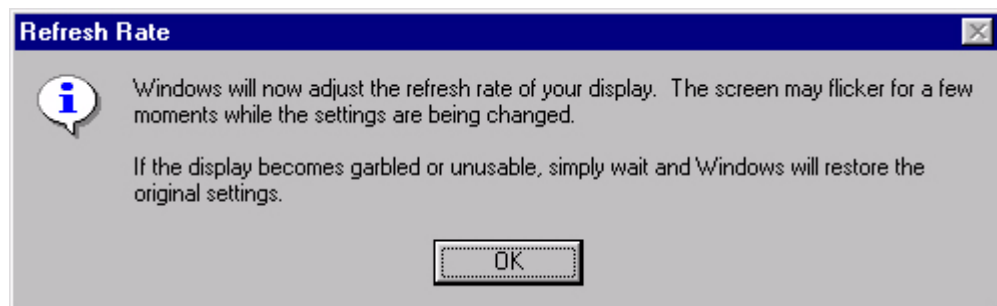
2. From the "**Display Properties**" window, select the "**Settings**" tab. Click the "**Advanced...**" button in the bottom right corner.



3. Select the "**Adapter**" tab. The refresh rate selection field is located in the center at the bottom of the window.



4. Choose a refresh rate from the table with the factory modes, which can be found in the user's guide, and select this in the settings field.
5. In the subsequent windows press "**Change**", "**OK**" and "**Yes**".



6. You can now close "**Display Properties**".

## D. Picture Optimization

The easiest way to obtain an optimal display is to use the *ikey* function. Press the “**ikey**” on the control panel and the monitor will adjust automatically.

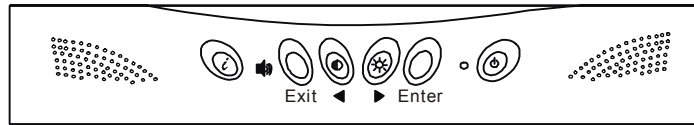
If you are still not satisfied with the result, you can still adjust the image manually.

1. Run the test program auto.exe from CD-ROM, this is the best way to observe possible changes. You can also use any other image, such as the desktop of your operating system. But we recommend you to use auto.exe. As you run auto.exe, a test pattern emerges.
2. Press “**Enter**” on control panel to access OSD.
3. If there are vertical noises observed, press “<” or “>” key to select “**FINE TUNE**” and press “**Enter**” key. Then press “<” or “>” key to select “**CLOCK**” and also press “**Enter**” key again. Now, press “<” or “>” to adjust the monitor till the noises disappear.
4. If there are horizontal noises observed, press “<” or “>” key to select “**FINE TUNE**” and press “**Enter**” key. Then press “<” or “>” key to select “**PHASE**” and also press “**Enter**” key again. Now, press “<” or “>” to adjust the monitor till the noises disappear.

To make sure the “**iKey**” function performs well, you have to use one of the supported modes. If the *ikey* does not work properly and the “**NON PRESET MODE**” message is on the OSD, it means you do not use one of the supported modes. Please set your computer to use one of the supported modes. You may find the list of supported modes in this manual.

## Adjusting the Monitor

### A Look at the Control Panel



There are 6 keys for user's control including "iKey", "Exit", "Enter", "<" and ">" key and a power switch. The following descriptions are the introduction of these keys & switch.

1. "Power": Turn the power on or off.
2. "iKey" : Adjust vertical position, phase, horizontal position and pixel clock automatically.
3. "Exit" key: Back to main menus, save menu or exist OSD menu without saving.
4. "Enter" key: Enter sub-menus, select items or save items.
5. "<": For Left adjustment. Left key is the hot key for Contrast adjustment.
6. ">": For Right adjustment. Right key is the hot key for Brightness adjustment.

### Hot Key Mode

#### Contrast hot-key

<ol style="list-style-type: none"> <li>1. Press Left key to activate Contrast hot-key.</li> <li>2. Press Left/Right key to reduce/increase the value of contrast.</li> <li>3. Press Exit key to leave the hot-key mode.</li> <li>4. The scale of adjustment is 0-100.</li> </ol>	
----------------------------------------------------------------------------------------------------------------------------------------------------------------------------------------------------------------------------------------------------------------------------------	--

#### Brightness hot-key

<ol style="list-style-type: none"> <li>1. Press Right key to activate Brightness hot-key.</li> <li>2. Press Left/Right key to reduce/increase the value of brightness.</li> <li>3. Press Exit key to leave the hot-key mode.</li> <li>4. The scale of adjustment is 0-100.</li> </ol>	
---------------------------------------------------------------------------------------------------------------------------------------------------------------------------------------------------------------------------------------------------------------------------------------	--

#### Volume hot-key

<ol style="list-style-type: none"> <li>1. Press Exit key to activate Volume hot-key.</li> <li>2. Press Left/Right key to reduce/increase the value of volume.</li> <li>3. Press Exit key to leave the hot-key mode.</li> <li>4. The scale of adjustment is 0-100.</li> </ol>	
------------------------------------------------------------------------------------------------------------------------------------------------------------------------------------------------------------------------------------------------------------------------------	--

## Main Menu Mode

### Control Functions Available in Main Menu

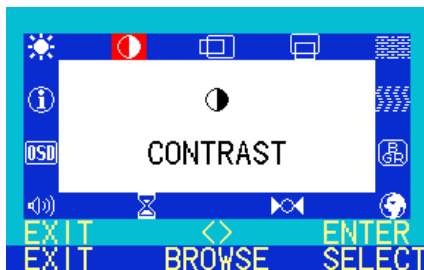
#### Brightness

1. Press Enter key to enter brightness adjustment submenu.
2. Press Left/Right key to reduce/increase the value of brightness.
3. Press Exit key to leave the submenu.
4. The scale of adjustment is 0-100.



#### Contrast

1. Press Enter key to enter contrast adjustment submenu.
2. Press Left/Right key to reduce/increase the value of contrast.
3. Press Exit key to leave the submenu.
4. The scale of adjustment is 0-100.



#### Horizontal Position

This function can adjust the horizontal position of display on screen.

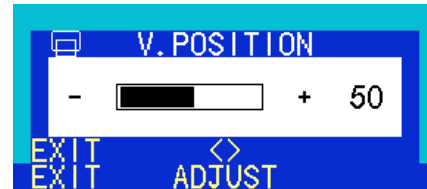
1. Press Enter key to enter horizontal position adjustment submenu.
2. Press Left/Right key to reduce/increase the value of horizontal position.
3. Press Exit key to leave the submenu.
4. The scale of adjustment is 0-100.



## Vertical Position

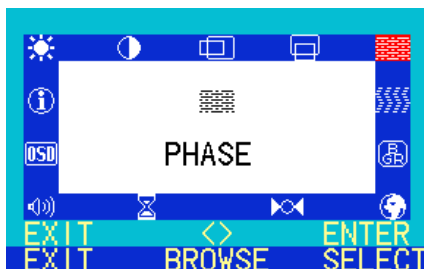
This function can adjust the vertical position of display on screen.

1. Press Enter key to enter vertical position adjustment submenu.
2. Press Left/Right key to reduce/increase the value vertical position.
3. Press Exit key to leave the submenu.
4. The scale of adjustment is 0-100.



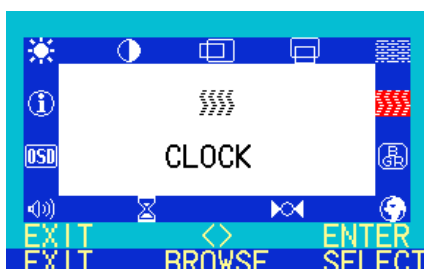
## Phase

1. Press Enter key to enter phase adjustment submenu.
2. Press Left/Right key to reduce/increase the value of phase.
3. Press Exit key to leave the submenu.
4. The scale of adjustment is 0-64.



## Clock

1. Press Enter key to enter clock adjustment submenu.
2. Press Left/Right key to reduce/increase the value of clock.
3. Press Exit key to leave the submenu.
4. The scale of adjustment is 0-100.



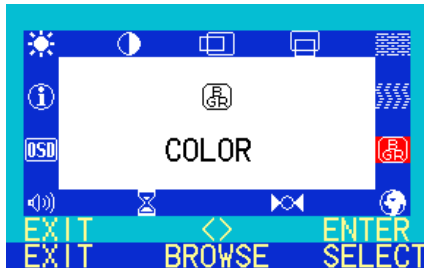




## Color

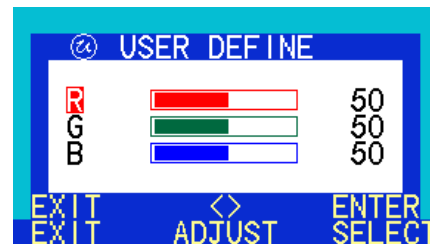
This function lets user to choice color temperature from C1 to C3, or to set up user mode. C1: 9300K, C2: 6500K, C3: 5800K

1. Press Enter key to enter color select submenu.
2. Press Left/Right key to select within C1 to C3 and user define.
3. Select user define and press Enter key to enter user define submenu.
4. Select one setting within C1 to C3 and press exit to set the color temperature.



This function can adjust the setting of each color.

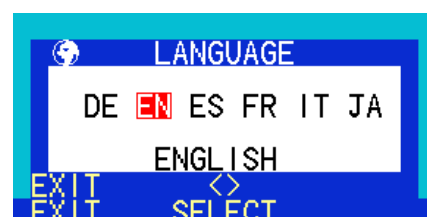
1. Press Enter key to enter user define submenu.
2. Press Left/Right key and Enter key to select the color to be adjusted.
3. Press Left/Right key to reduce/increase the value of each color.
4. Press Exit key to leave the submenu.
5. The scale of adjustment is 0-100.



## Languages

This function lets user to select the OSD language.

**De:** Deutsch **En:** English **Es:** Español **Fr:** Français **It:** Italiano **Ja:** Japanese  
 簡中 : Simplified Chinese 繁中 : Traditional Chinese

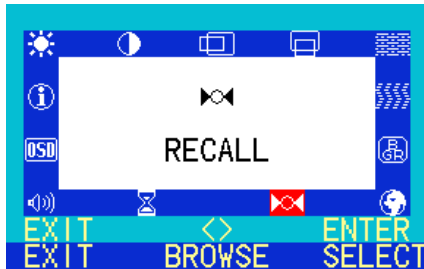




## Recall

This function lets user to recover the ex-factory settings.

1. Press Enter key to enter recall submenu.
2. Press Left/Right key to select Yes/No.
3. Press Enter to confirm the selection.
4. Press Exit key to cancel the selection and leave the submenu.



## OSD Time

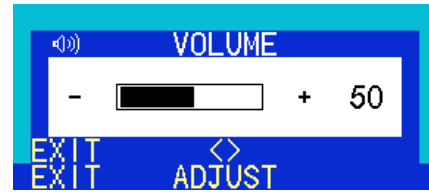
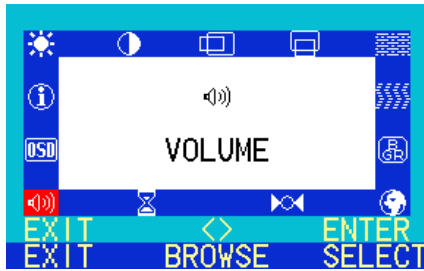
This function lets user to set the OSD menu lasting time.

1. Press Enter key to enter OSD time adjustment submenu.
2. Press Left/Right key to reduce/increase the lasting time.
3. Press Exit key to leave the submenu.
4. The scale of adjustment is 5-60.



## Volume

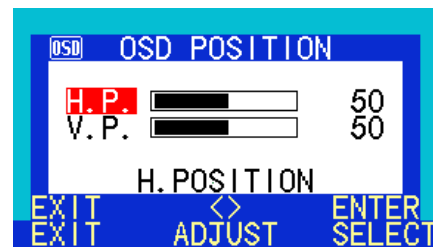
1. Press Enter key to enter volume adjust submenu.
2. Press Left/Right key to reduce/increase the value of volume.
3. Press Exit key to leave the submenu.
4. The scale of adjustment is 0-100.



## OSD Position

This function lets user to adjust the horizontal and vertical position of OSD.

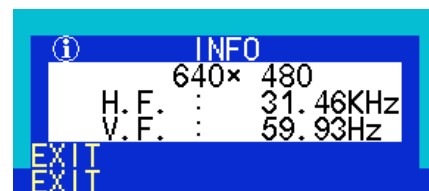
1. Press Enter key to enter OSD position adjustment submenu.
2. Press Left/Right key and Enter key to select H.P. (horizontal position) or V.P. (vertical position).
3. Press Left/Right key to adjust the position.
4. Press Exit key to leave the submenu.
5. The scale of adjustment is 0-100.



## Information

This function shows display information.

1. Press Enter key to enter info display.
2. Press Exit key to leave the submenu.



## Troubleshooting

### Frequently Asked Questions (FAQ)

#### ✓ The image is blurred:

☞ Read the chapter, "Installation/Adjustment" and select the correct resolution, refresh rate and make adjustments based on these instructions.

☞ Do you use a VGA extension cable?

Remove the extension cable for the test. Is the image now in focus? If not, optimize the image working on the description in the chapter, "Installation/Adjustment." It is normal for blurring to occur due to conduction losses in extension cables. You can minimize these losses by using an extension cable with better conduction quality or with a built-in booster.

☞ Does the blurring only occur at resolutions lower than the native (maximum) resolution?

Read the chapter "Installation/Adjustment." Select the native resolution.

#### ✓ Pixel errors can be seen:

☞ One of several pixels are permanently black, one or more pixels are permanently white, one or more pixels are permanently red, green, blue or another colour.

Read the chapter "Pixel Error Rates."

#### ✓ The image has a faulty colour appearance:

☞ It has a yellow, blue or pink appearance.

On the monitor press the "Enter" button and use the "<" or ">" keys to move to the "information" menu. Press "Enter" to "Recall" the preset mode. If the image is still not correct and the OSD also has a fault colour appearance, then one of the three primary colours is missing in the signal input. Now check the VGA cable contacts. If any pins are bent or broken off, then contact your dealer or read the chapter, Additional Help, Repairs & Service.

#### ✓ No image can be seen:

☞ Is the prompt on the display illuminated in green?

If the LED is illuminated in green, then press the "Exit" button on the monitor to access the On Screen Display. If the message "Not supported Mode" appears, read the chapter "Installation/Adjustment."

☞ Is the prompt on the display illuminated in orange?

If the LED is illuminated in orange, then the power management mode is active. Press a button on the computer keyboard or move the mouse. If that does not help, then check the VGA cable contacts. If any pins are bent or broken off, then contact your dealer or read the chapter, Additional Help, Repairs & Service.

☞ Is the prompt on the display not illuminated at all?

Check the power supply mains socket, the external power supply and the mains switch.

✓ **The image is distorted, flashes or flickers:**

☞ Read the chapter, "Installation/Adjustment" and then select the correct resolution, refresh rate and make adjustments based on these instructions.

✓ **The image is displaced in one direction:**

☞ Read the chapter, "Installation/Adjustment" and then select the correct resolution, refresh rate and make adjustments based on these instructions.

**Need More Help?**

If your problems remain after checking this manual, please contact your place of purchase or e-mail us at: [Support@BenQ.com](mailto:Support@BenQ.com)

## Supported operating modes

Incoming display mode(Input timing)					Multi-scan operation
Resolution	Horizontal Frequency (KHz)	Vertical Frequency (Hz)	Dot Clock Frequency (MHz)	Remark	Actual display resolution
640x350	31.47(P)	70.08(N)	25.17	DOS	1280X943
*720x400	31.47(N)	70.08(P)	28.32	DOS	1280X1024 full screen
640x480	31.47(N)	60.00(N)	25.18	DOS	
640x480	35.00(N)	67.00(N)	30.24	Macintosh	
640x480	37.86(N)	72.80(N)	31.5	VESA	
640x480	37.50(N)	75.00(N)	31.5	VESA	
800x600	37.88(P)	60.32(P)	40.00	VESA	
800x600	48.08(P)	72.19(P)	50.00	VESA	
*800x600	46.86(P)	75.00(P)	49.50	VESA	
832X624	49.72(N)	74.55(N)	57.29	Macintosh	
*1024x768	48.36(N)	60.00(N)	65.00	VESA	
1024x768	56.48(N)	70.10(N)	75.00	VESA	
*1024x768	60.02(P)	75.00(P)	78.75	VESA	
1024X768	60.24(N)	74.93(N)	80.00	Macintosh	
1152x864	67.50(P)	75.00(P)	108.00	VESA	
*1152x870	68.68(N)	75.06(N)	100.00	Macintosh	
1152x900	61.80(N)	66.00(N)	92.94	SUN 66	
*1152x900	71.81(N)	76.14(N)	108.00	SUN	
1280x1024	64.00(P)	60.00(P)	108.00	VESA	
1280x1024	75.83(N)	71.53(N)	128.00	IBMI	
*1280x1024	80.00(P)	75.00(P)	135.00	VESA	
*1280x1024	81.18(N)	76.16(N)	135.09	SPARC2	

- Modes, which are not listed in the above table, may not be supported. For an optimal picture it is recommended to choose a mode listed in the table.
- There are 22 available modes that are compatible with Windows.
- Image disruption may occur as a result of signal frequency differences from VGA cards which do not correspond with the usual standard. This is not, however, an error. You may improve this situation by altering an automatic setting or by manually changing the phase setting and the pixel frequency from the "Geometry" menu.
- If you switch off the monitor, interference lines can occur on your screen. But do not be concerned about this, as it is normal.
- To extend the service life of the product, we recommend you use your computer's power management function.

## Specifications

<b>Model</b>	<b>FP767</b>
767Display type	17.0" ,active, TFT
Viewable diagonal	43.2 cm
Native (maximum) resolution	1,280X1,024
Colors	16.7 million
Contrast / Brightness	500:1 (Max. 600:1) / 260 cd/m <sup>2</sup> (Max. 290 cd/m <sup>2</sup> )
Response time	16 ms
Viewing angle (left/right, up/down)	70/70, 70/70 (CR=10) 80/80, 80/80 (CR=5)
Line frequency	31.47 - 83 kHzMulti- frequency monitor
Image frequency	56.25 - 75.0 Hz modes within these parameters
Image checks	Digital, Screen OSD Technology, <i>iKey</i> (automatic image setting)
Controls	5 buttons and <i>iKey</i> .
iScreen functions	Contrast, brightness, vert. & hor. image position, phase, pixel clock, color balance, color palette, choice of language (8 language OSD), OSD position, status indicator
Power Management	VESA DPMS, EPA
Max. power consumption	50 Watt Max
Power saving mode	< 3 Watt
Input signal	RGB analog 0.7 Vpp/75 Ohm positive
Synchronisation	TTL separate signal connection 15-pin mini D-sub cable
Temperature (operating)	5 °C - 40 °C
Air humidity (operating)	20% - 80%
Certifications	TCO 99 (Optional), TÜV/Ergonomics, TÜV/ GS, FCC Class B, ISO 13406-2, VCCI, UL, CB Report, CE, C-Tick, BSMI, Fimko, GOST
Operating voltage	Automatic switched mode power supply, 90-264 V, 47-63Hz
Dimensions (W x H x D)	382.7x 404.3 x 200 mm
Weight	4.4 kg